



2523 12th Avenue Court
Greeley, CO 80631



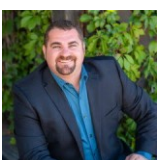
Single Family

1600 SQFT

3 Beds

2 Baths

1 Car



Brad Inhulsen
970-584-4144
brad@yournocorealtor.com



2523 12th Avenue Court, Greeley, CO 80631 – Main



TOTAL: 1332 sq. ft
Basement: 573 sq. ft, 1st floor: 759 sq. ft
EXCLUDED AREAS: UTILITY: 151 sq. ft, GARAGE: 207 sq. ft, PATIO: 480 sq. ft,
DECK: 123 sq. ft, WALLS: 135 sq. ft

Floor Plan Created By V1photos.com. Measurements Deamed Highly Reliable But Not Guaranteed.



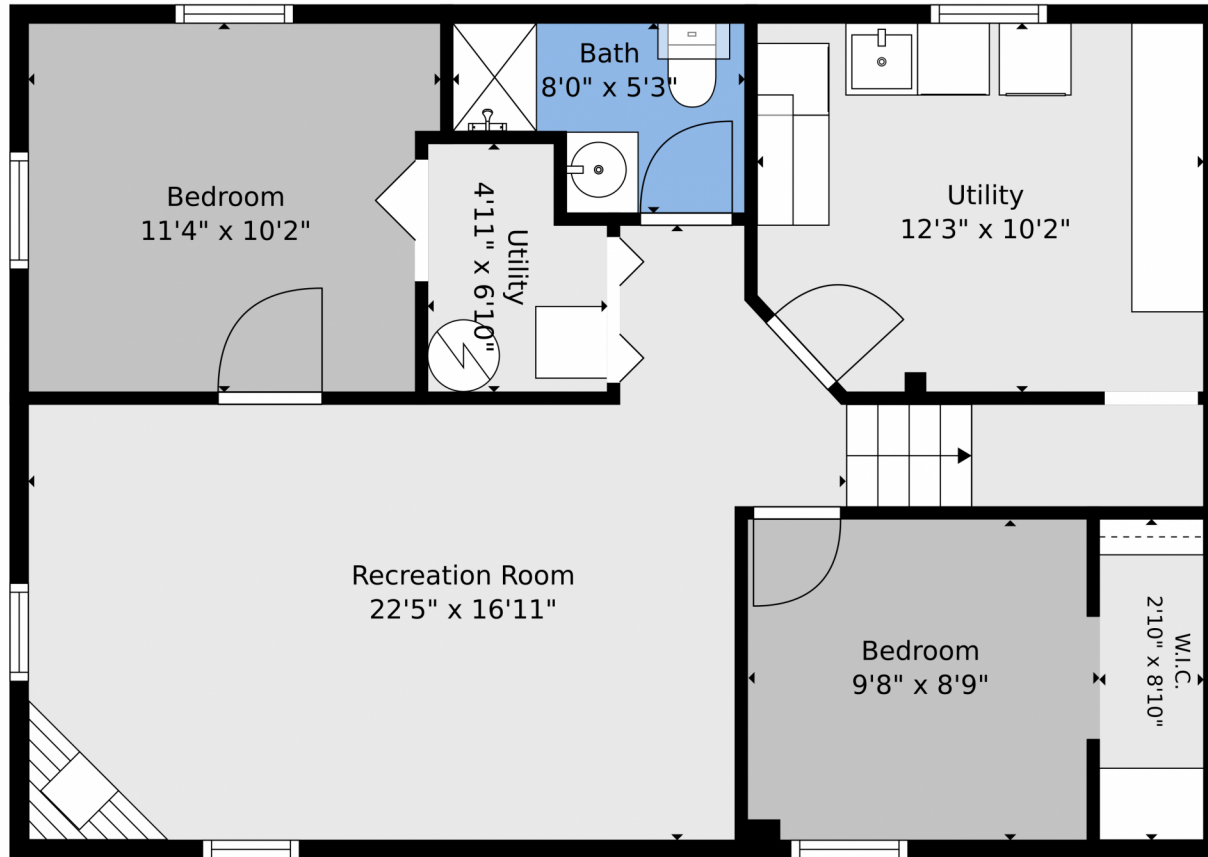
Disclaimer: Sizes and Dimensions are Approximate, Actual May Vary.



Brad Inhulsen
970-584-4144
brad@yournocorealtor.com



2523 12th Avenue Court, Greeley, CO 80631 – Basement



TOTAL: 1332 sq. ft
Basement: 573 sq. ft, 1st floor: 759 sq. ft
EXCLUDED AREAS: UTILITY: 151 sq. ft, GARAGE: 207 sq. ft, PATIO: 480 sq. ft,
DECK: 123 sq. ft, WALLS: 135 sq. ft

Floor Plan Created By V1photos.com. Measurements Deamed Highly Reliable But Not Guaranteed.



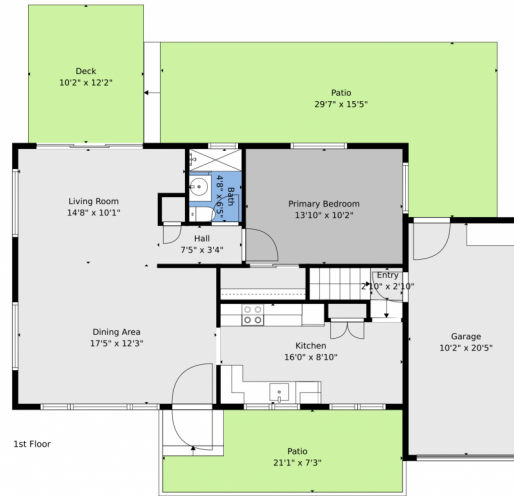
Disclaimer: Sizes and Dimensions are Approximate, Actual May Vary.



Brad Inhulsen
970-584-4144
brad@yournocorealtor.com



2523 12th Avenue Court, Greeley, CO 80631 – All Levels



TOTAL: 1332 sq. ft
Basement: 573 sq. ft, 1st floor: 759 sq. ft
EXCLUDED AREAS: UTILITY: 151 sq. ft, GARAGE: 207 sq. ft, PATIO: 480 sq. ft,
DECK: 123 sq. ft, WALLS: 135 sq. ft

Floor Plan Created By V1photos.com. Measurements Deamed Highly Reliable But Not Guaranteed.



Disclaimer: Sizes and Dimensions are Approximate, Actual May Vary.



Brad Inhulsen
970-584-4144
brad@yournocorealtor.com

