



3945 South Willow Way
 Denver, CO 80237
COMMUNITY: Hutchinson Hills

MLS # 2267041
 PRICE \$675,000



Single Family



2385 SQFT



3 Beds



3 Baths



2 Car



0.27 Acre

PROPERTY DETAILS

This tri-level home on a spacious lot is just minutes from Cherry Creek State Park. The inviting 3-bed, 3-bath layout features a vaulted main level, a bay-window living room, and a formal dining area perfect for gatherings. The eat-in kitchen boasts ample cabinetry, stainless-steel appliances, and skylights. The lower level includes a cozy family room with a gas fireplace and access to the backyard patio, along with an office/bedroom and a full bath. The primary suite upstairs has a renovated ensuite bath and walk-in closet, while another bedroom offers flexibility. The finished basement provides a rec room and laundry area. The backyard features a brick patio, half court, garden beds, and a shaded lawn, all near Rosamond Park and quick access to Downtown Denver.

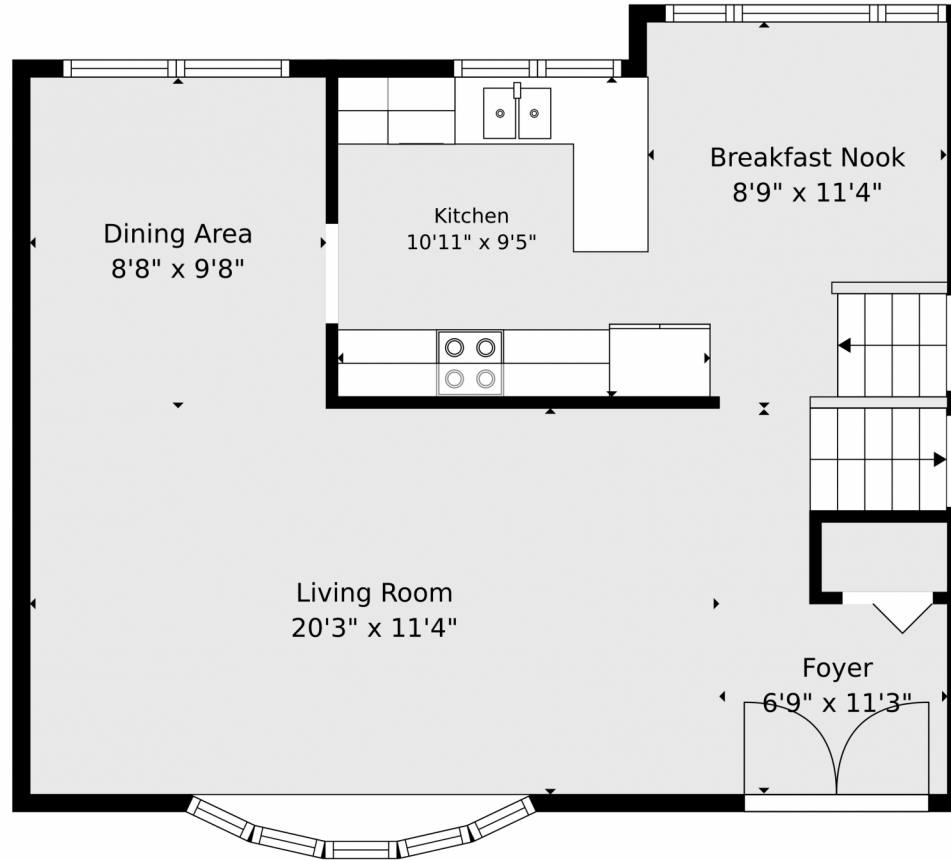


Blair Bryant | Designated Broker
 720-589-1740
 Blair@StellerRealEstate.com
<https://www.StellerRealEstate.com>



Scan code
 for more
 property
 details





TOTAL: 2422 sq. ft
Basement: 449 sq. ft, 1st floor: 762 sq. ft, 2nd floor: 592 sq. ft, 3rd floor: 619 sq. ft
EXCLUDED AREAS: UTILITY: 105 sq. ft, FIREPLACE: 11 sq. ft, WALLS: 225 sq. ft

Floor Plan Created By V1photos.com. Measurements Deamed Highly Reliable But Not Guaranteed.



Disclaimer: Sizes and Dimensions are Approximate, Actual May Vary.



Blair Bryant | Designated Broker

720-589-1740

Blair@StellerRealEstate.com

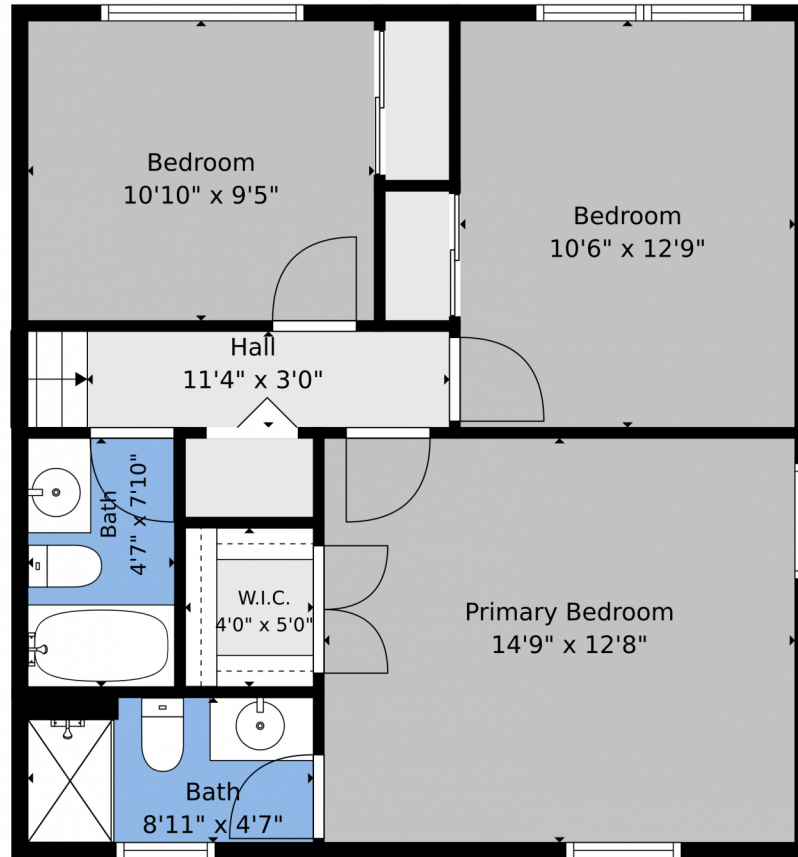
<https://www.StellerRealEstate.com>



Scan code
for more
property
details



3945 South Willow Way, Denver, CO 80237 – 2nd Level



TOTAL: 2422 sq. ft
Basement: 449 sq. ft, 1st floor: 762 sq. ft, 2nd floor: 592 sq. ft, 3rd floor: 619 sq. ft
EXCLUDED AREAS: UTILITY: 105 sq. ft, FIREPLACE: 11 sq. ft, WALLS: 225 sq. ft

Floor Plan Created By V1photos.com. Measurements Deamed Highly Reliable But Not Guaranteed.



Disclaimer: Sizes and Dimensions are Approximate, Actual May Vary.



Blair Bryant | Designated Broker

720-589-1740

Blair@StellerRealEstate.com

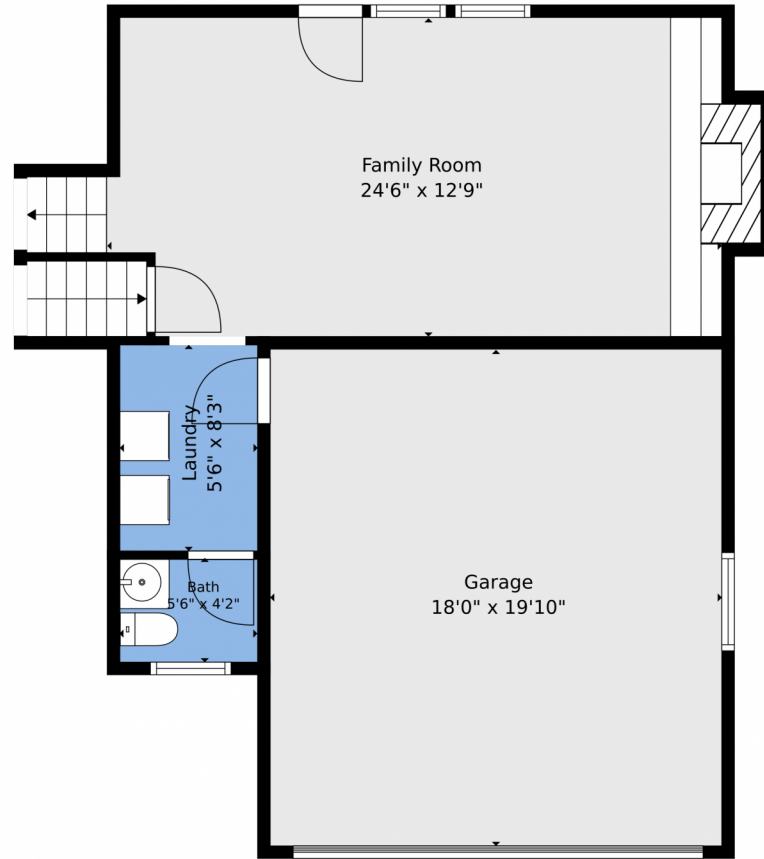
<https://www.StellerRealEstate.com>



Scan code
for more
property
details



3945 South Willow Way, Denver, CO 80237 – Lower Level



TOTAL: 2422 sq. ft

Basement: 449 sq. ft, 1st floor: 762 sq. ft, 2nd floor: 592 sq. ft, 3rd floor: 619 sq. ft
EXCLUDED AREAS: UTILITY: 105 sq. ft, FIREPLACE: 11 sq. ft, WALLS: 225 sq. ft

Floor Plan Created By V1photos.com. Measurements Deamed Highly Reliable But Not Guaranteed.



Disclaimer: Sizes and Dimensions are Approximate, Actual May Vary.



Blair Bryant | Designated Broker

720-589-1740

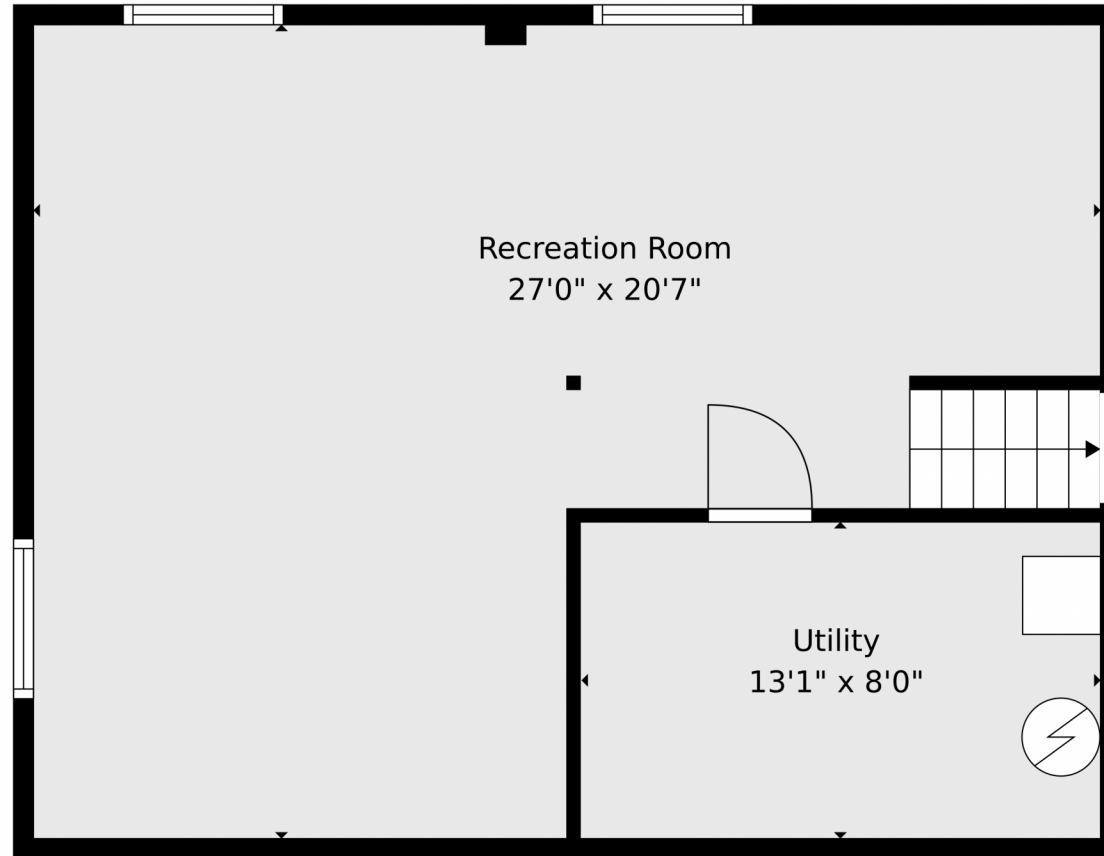
Blair@StellerRealEstate.com

<https://www.StellerRealEstate.com>



Scan code
for more
property
details





TOTAL: 2422 sq. ft
Basement: 449 sq. ft, 1st floor: 762 sq. ft, 2nd floor: 592 sq. ft, 3rd floor: 619 sq. ft
EXCLUDED AREAS: UTILITY: 105 sq. ft, FIREPLACE: 11 sq. ft, WALLS: 225 sq. ft

Floor Plan Created By V1photos.com. Measurements Deamed Highly Reliable But Not Guaranteed.



Disclaimer: Sizes and Dimensions are Approximate, Actual May Vary.



Blair Bryant | Designated Broker

720-589-1740

Blair@StellerRealEstate.com

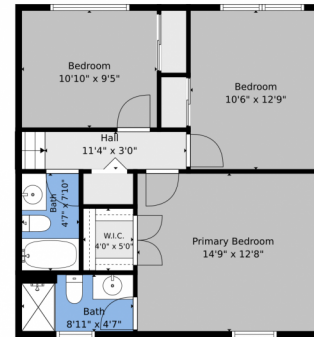
<https://www.StellerRealEstate.com>



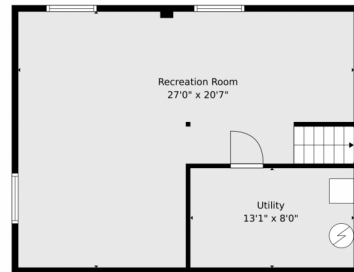
3945 South Willow Way, Denver, CO 80237 – All Levels



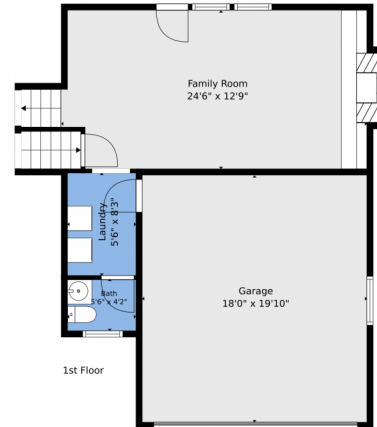
2nd Floor



3rd Floor



Basement



1st Floor

TOTAL: 2422 sq. ft

Basement: 449 sq. ft, 1st floor: 762 sq. ft, 2nd floor: 592 sq. ft, 3rd floor: 619 sq. ft
EXCLUDED AREAS: UTILITY: 105 sq. ft, FIREPLACE: 11 sq. ft, WALLS: 225 sq. ft

Floor Plan Created By V1photos.com. Measurements Deamed Highly Reliable But Not Guaranteed.



Disclaimer: Sizes and Dimensions are Approximate, Actual May Vary.



Blair Bryant | Designated Broker

720-589-1740

Blair@StellerRealEstate.com

<https://www.StellerRealEstate.com>



Scan code
for more
property
details

