



Single Family

1834 SQFT

3 Beds

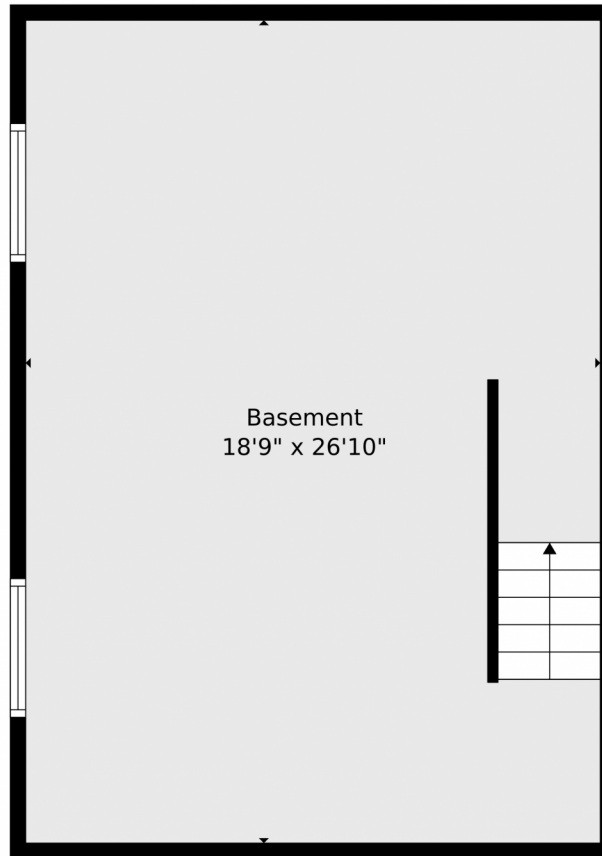
2/1 Baths



Taylor Haas
 303-665-7368
 taylorh@coloradorpm.com
<https://www.coloradorpm.com/available-rental-properties-denver>



4982 Rusty Nail Point, Colorado Springs, CO 80916 – Lower Level



TOTAL: 1229 sq. ft
Basement: 0 sq. ft, 1st floor: 504 sq. ft, 2nd floor: 725 sq. ft
EXCLUDED AREAS: BASEMENT: 504 sq. ft, GARAGE: 235 sq. ft, PORCH: 102 sq. ft,
COVERED PATIO: 117 sq. ft, UTILITY: 27 sq. ft, WALLS: 170 sq. ft

Floor Plan Created By V1photos.com. Measurements Deamed Highly Reliable But Not Guaranteed.



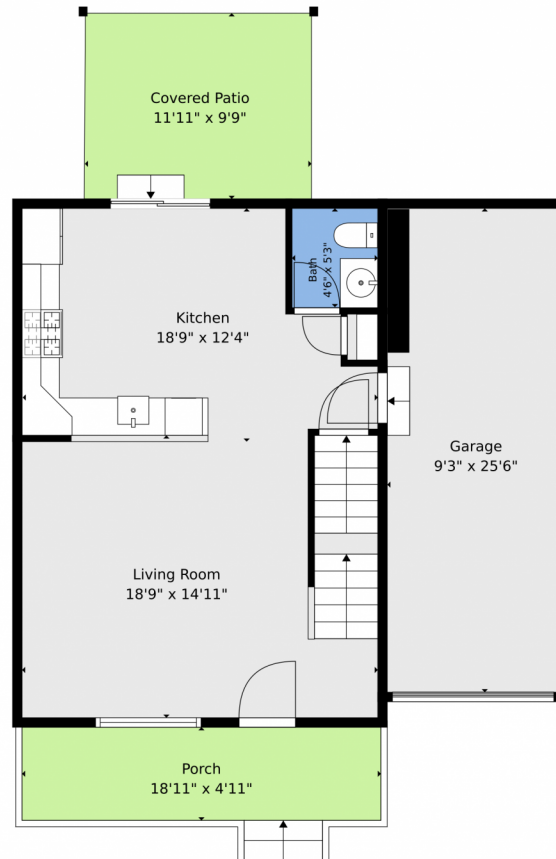
Disclaimer: Sizes and Dimensions are Approximate, Actual May Vary.



Taylor Haas
303-665-7368
taylorh@coloradorpm.com
<https://www.coloradorpm.com/available-rental-properties-denver>



4982 Rusty Nail Point, Colorado Springs, CO 80916 – Main Level



TOTAL: 1229 sq. ft

Basement: 0 sq. ft, 1st floor: 504 sq. ft, 2nd floor: 725 sq. ft
EXCLUDED AREAS: BASEMENT: 504 sq. ft, GARAGE: 235 sq. ft, PORCH: 102 sq. ft,
COVERED PATIO: 117 sq. ft, UTILITY: 27 sq. ft, WALLS: 170 sq. ft

Floor Plan Created By V1photos.com. Measurements Deamed Highly Reliable But Not Guaranteed.



Disclaimer: Sizes and Dimensions are Approximate, Actual May Vary.



Taylor Haas

303-665-7368

taylorh@coloradorpm.com

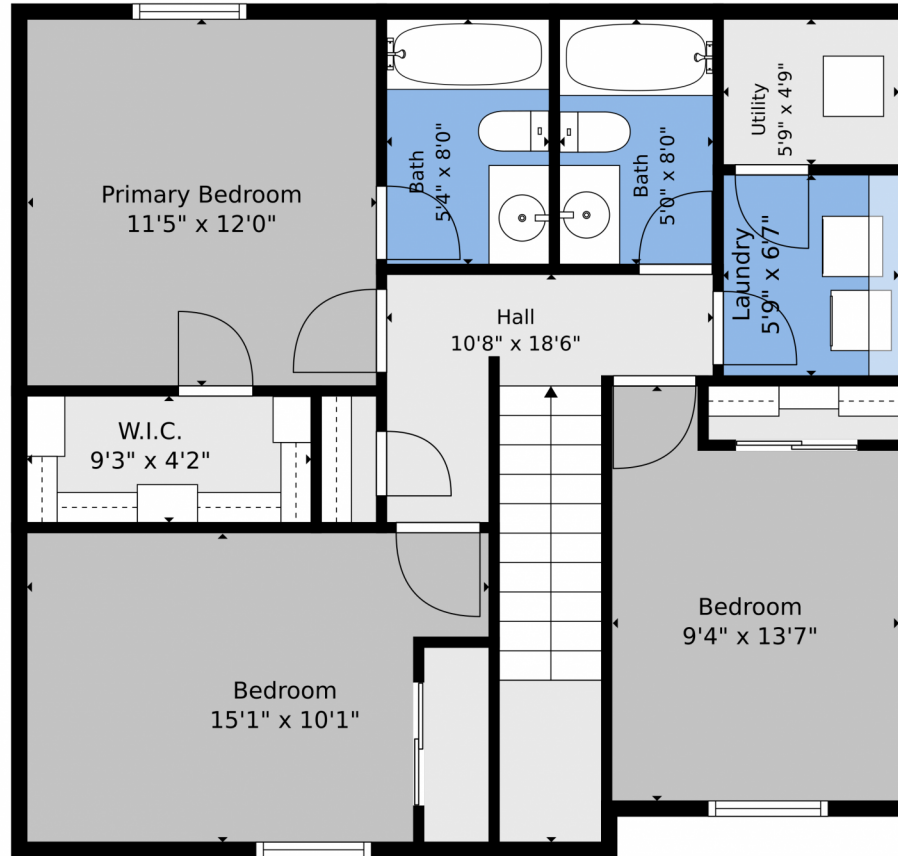
<https://www.coloradorpm.com/available-rental-properties-denver>



Scan code
for more
property
details



4982 Rusty Nail Point, Colorado Springs, CO 80916 – Upper Level



TOTAL: 1229 sq. ft
Basement: 0 sq. ft, 1st floor: 504 sq. ft, 2nd floor: 725 sq. ft
EXCLUDED AREAS: BASEMENT: 504 sq. ft, GARAGE: 235 sq. ft, PORCH: 102 sq. ft,
COVERED PATIO: 117 sq. ft, UTILITY: 27 sq. ft, WALLS: 170 sq. ft

Floor Plan Created By V1photos.com. Measurements Deamed Highly Reliable But Not Guaranteed.



Disclaimer: Sizes and Dimensions are Approximate, Actual May Vary.



Taylor Haas
303-665-7368
taylorh@coloradorpm.com
<https://www.coloradorpm.com/available-rental-properties-denver>



4982 Rusty Nail Point, Colorado Springs, CO 80916 – All Levels



TOTAL: 1229 sq. ft
Basement: 0 sq. ft, 1st floor: 504 sq. ft, 2nd floor: 725 sq. ft
EXCLUDED AREAS: BASEMENT: 504 sq. ft, GARAGE: 235 sq. ft, PORCH: 102 sq. ft,
COVERED PATIO: 117 sq. ft, UTILITY: 27 sq. ft, WALLS: 170 sq. ft

Floor Plan Created By V1photos.com. Measurements Deamed Highly Reliable But Not Guaranteed.



Disclaimer: Sizes and Dimensions are Approximate, Actual May Vary.



Taylor Haas
303-665-7368
taylorh@coloradorpm.com
<https://www.coloradorpm.com/available-rental-properties-denver>



Scan code
for more
property
details