



10990 Memphis Court
Commerce City, CO 80022




 Single Family

 2868 SQFT

 3 Beds

 2/1 Baths

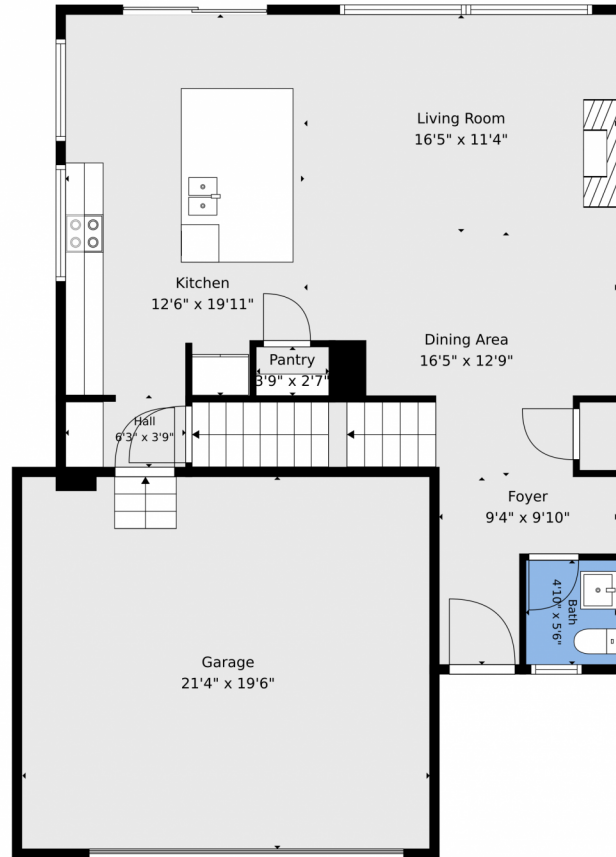
 2 Car

 0.13 Acre

Jordan Kermes
952-956-2958
jordan@kermeshomes.com



10990 Memphis Court, Commerce City, CO 80022 – Main



TOTAL: 1943 sq. ft

Basement: 70 sq. ft, 1st floor: 782 sq. ft, 2nd floor: 1091 sq. ft

EXCLUDED AREAS: BASEMENT: 712 sq. ft, GARAGE: 416 sq. ft, WALLS: 224 sq. ft

Floor Plan Created By V1photos.com. Measurements Deamed Highly Reliable But Not Guaranteed.

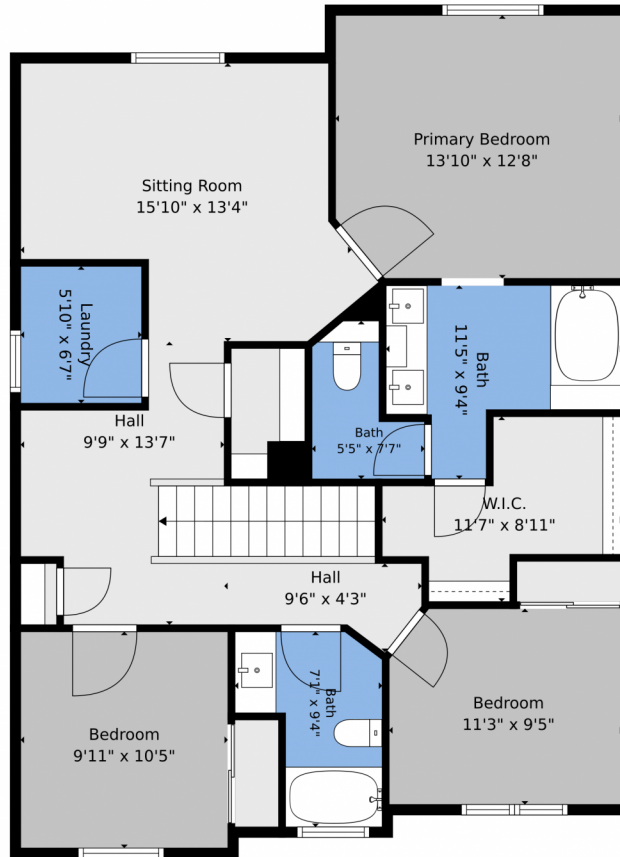


Disclaimer: Sizes and Dimensions are Approximate, Actual May Vary.

Jordan Kermes
952-956-2958
jordan@kermeshomes.com



10990 Memphis Court, Commerce City, CO 80022 – 2nd Level



TOTAL: 1943 sq. ft
Basement: 70 sq. ft, 1st floor: 782 sq. ft, 2nd floor: 1091 sq. ft
EXCLUDED AREAS: BASEMENT: 712 sq. ft, GARAGE: 416 sq. ft, WALLS: 224 sq. ft

Floor Plan Created By V1photos.com. Measurements Deamed Highly Reliable But Not Guaranteed.

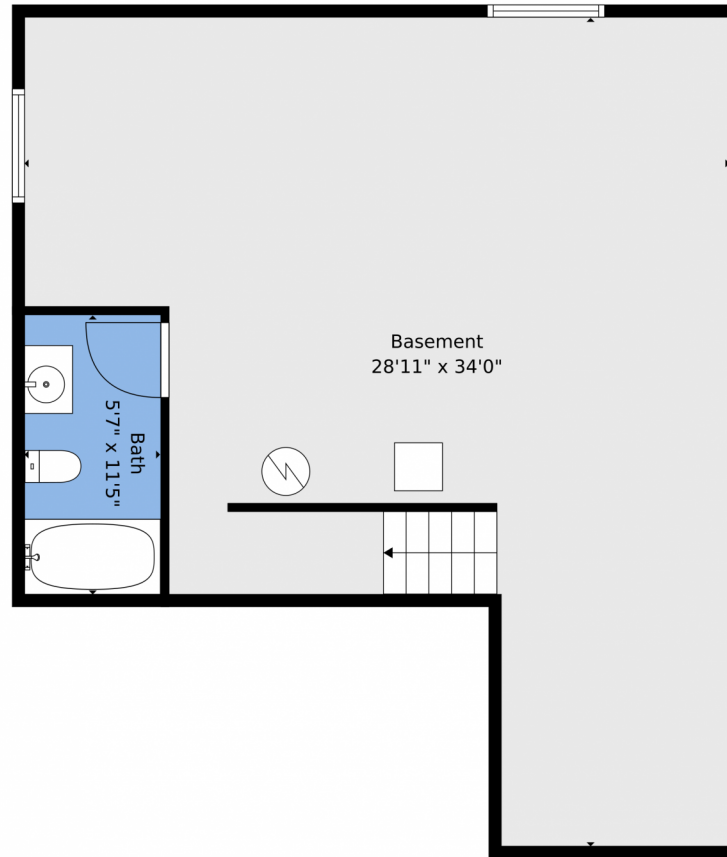


Disclaimer: Sizes and Dimensions are Approximate, Actual May Vary.

Jordan Kermes
952-956-2958
jordan@kermeshomes.com



10990 Memphis Court, Commerce City, CO 80022 – Basement



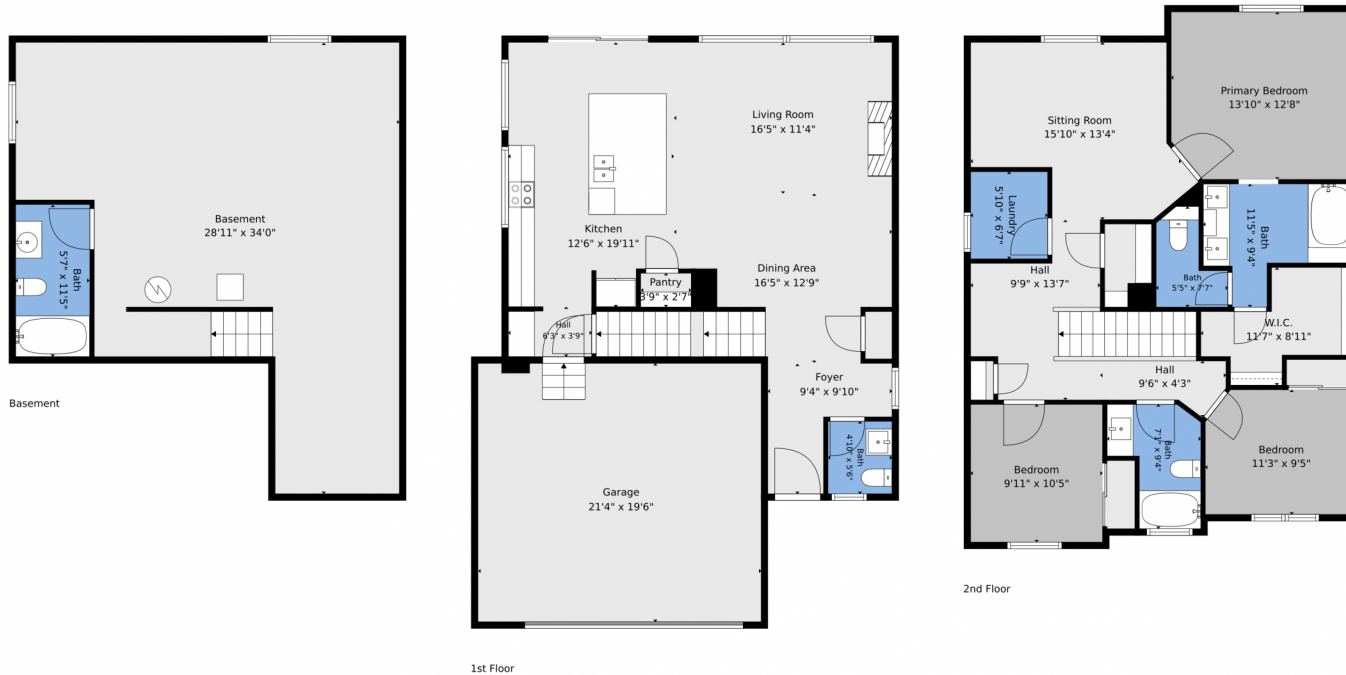
TOTAL: 1943 sq. ft
Basement: 70 sq. ft, 1st floor: 782 sq. ft, 2nd floor: 1091 sq. ft
EXCLUDED AREAS: BASEMENT: 712 sq. ft, GARAGE: 416 sq. ft, WALLS: 224 sq. ft

Floor Plan Created By V1photos.com. Measurements Deamed Highly Reliable But Not Guaranteed.



Disclaimer: Sizes and Dimensions are Approximate, Actual May Vary.

10990 Memphis Court, Commerce City, CO 80022 – All Levels



TOTAL: 1943 sq. ft
Basement: 70 sq. ft, 1st floor: 782 sq. ft, 2nd floor: 1091 sq. ft
EXCLUDED AREAS: BASEMENT: 712 sq. ft, GARAGE: 416 sq. ft, WALLS: 224 sq. ft

Floor Plan Created By V1photos.com. Measurements Deamed Highly Reliable But Not Guaranteed.



Disclaimer: Sizes and Dimensions are Approximate, Actual May Vary.