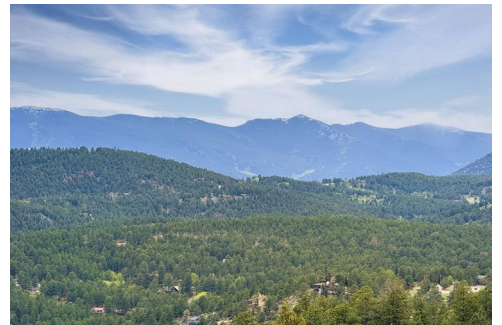




15073 South Wandcrest Drive
Pine, CO 80470



Single Family



6222 SQFT



4 Beds



4/1 Baths



3 Car



9 Acre



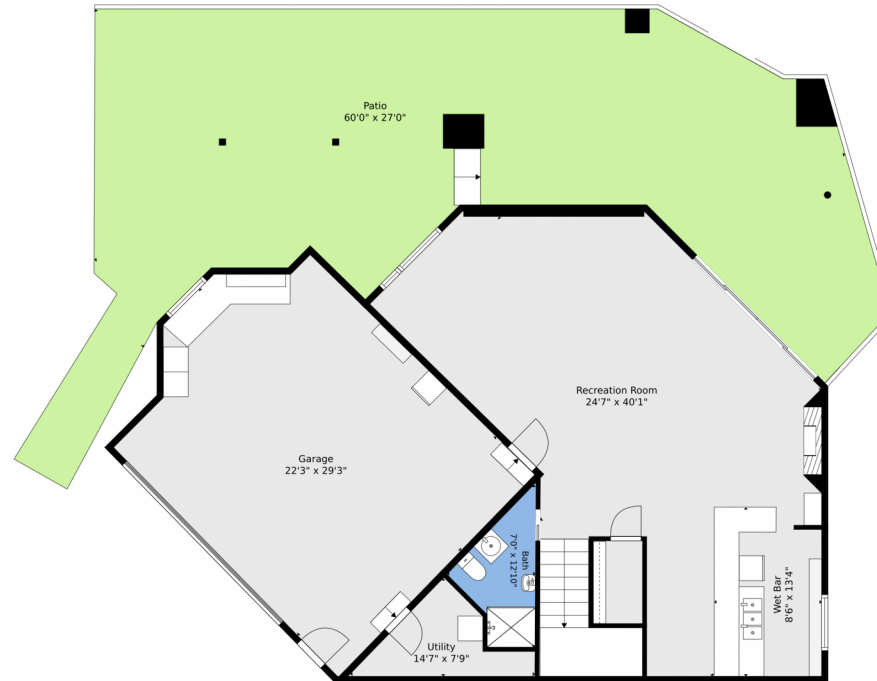
K.C. Golfinopoulos
720-750-2269
mountainrealtykc@gmail.com
<https://mountainrealtycolorado.com/>



Scan code
for more
property
details



15073 South Wandcrest Drive, Pine, CO 80470 – Lower Level



TOTAL: 5845 sq. ft

Basement: 940 sq. ft, 1st floor: 3032 sq. ft, 2nd floor: 1211 sq. ft, 3rd floor: 0 sq. ft, 4th floor: 372 sq. ft, 5th floor: 290 sq. ft
EXCLUDED AREAS: GARAGE: 597 sq. ft, UTILITY: 57 sq. ft, PATIO: 2757 sq. ft,
DECK: 1391 sq. ft, OPEN TO BELOW: 724 sq. ft, STORAGE: 875 sq. ft,
WALLS: 488 sq. ft

Floor Plan Created By V1photos.com. Measurements Deamed Highly Reliable But Not Guaranteed.

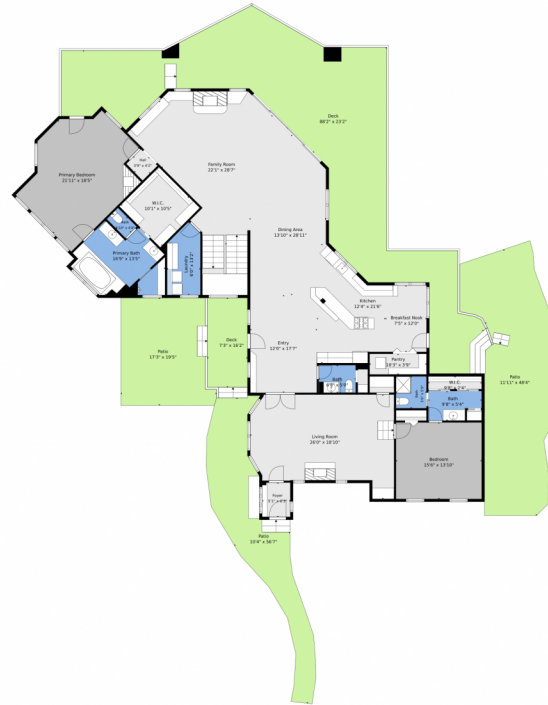


Disclaimer: Sizes and Dimensions are Approximate, Actual May Vary.



K.C. Golfinopoulos
720-750-2269
mountainrealtykc@gmail.com
<https://mountainrealtycolorado.com/>





TOTAL: 5845 sq. ft
Basement: 940 sq. ft, 1st floor: 3032 sq. ft, 2nd floor: 1211 sq. ft, 3rd floor: 0 sq. ft, 4th floor: 372 sq. ft, 5th floor: 290 sq. ft
EXCLUDED AREAS: GARAGE: 597 sq. ft, UTILITY: 57 sq. ft, PATIO: 2757 sq. ft,
DECK: 1391 sq. ft, OPEN TO BELOW: 724 sq. ft, STORAGE: 875 sq. ft,
WALLS: 488 sq. ft

Floor Plan Created By V1photos.com. Measurements Deamed Highly Reliable But Not Guaranteed.



Disclaimer: Sizes and Dimensions are Approximate, Actual May Vary.



K.C. Golfinopoulos
720-750-2269
mountainrealtykc@gmail.com
<https://mountainrealtycolorado.com/>



15073 South Wandcrest Drive, Pine, CO 80470 – 2nd Level



TOTAL: 5845 sq. ft

Basement: 940 sq. ft, 1st floor: 3032 sq. ft, 2nd floor: 1211 sq. ft, 3rd floor: 0 sq. ft, 4th floor: 372 sq. ft, 5th floor: 290 sq. ft
EXCLUDED AREAS: GARAGE: 597 sq. ft, UTILITY: 57 sq. ft, PATIO: 2757 sq. ft,
DECK: 1391 sq. ft, OPEN TO BELOW: 724 sq. ft, STORAGE: 875 sq. ft,
WALLS: 488 sq. ft

Floor Plan Created By V1photos.com. Measurements Deamed Highly Reliable But Not Guaranteed.



Disclaimer: Sizes and Dimensions are Approximate, Actual May Vary.



K.C. Golfinopoulos
720-750-2269
mountainrealtykc@gmail.com
<https://mountainrealtycolorado.com/>



Scan code
for more
property
details



15073 South Wandcrest Drive, Pine, CO 80470 – Barn



TOTAL: 5845 sq. ft
Basement: 940 sq. ft, 1st floor: 3032 sq. ft, 2nd floor: 1211 sq. ft, 3rd floor: 0 sq. ft, 4th floor: 372 sq. ft, 5th floor: 290 sq. ft
EXCLUDED AREAS: GARAGE: 597 sq. ft, UTILITY: 57 sq. ft, PATIO: 2757 sq. ft,
DECK: 1391 sq. ft, OPEN TO BELOW: 724 sq. ft, STORAGE: 875 sq. ft,
WALLS: 488 sq. ft

Floor Plan Created By V1photos.com. Measurements Deamed Highly Reliable But Not Guaranteed.

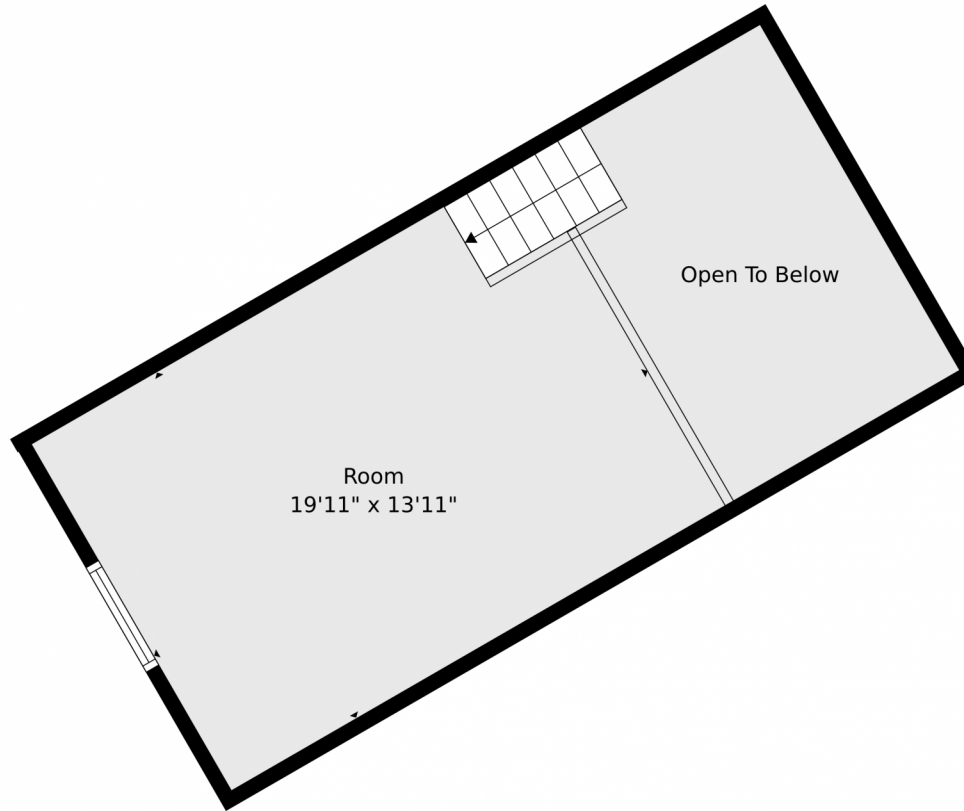


Disclaimer: Sizes and Dimensions are Approximate, Actual May Vary.



K.C. Golfinopoulos
720-750-2269
mountainrealtykc@gmail.com
<https://mountainrealtycolorado.com/>





TOTAL: 5845 sq. ft
Basement: 940 sq. ft, 1st floor: 3032 sq. ft, 2nd floor: 1211 sq. ft, 3rd floor: 0 sq. ft, 4th floor: 372 sq. ft, 5th floor: 290 sq. ft
EXCLUDED AREAS: GARAGE: 597 sq. ft, UTILITY: 57 sq. ft, PATIO: 2757 sq. ft,
DECK: 1391 sq. ft, OPEN TO BELOW: 724 sq. ft, STORAGE: 875 sq. ft,
WALLS: 488 sq. ft

Floor Plan Created By V1photos.com. Measurements Deamed Highly Reliable But Not Guaranteed.



Disclaimer: Sizes and Dimensions are Approximate, Actual May Vary.

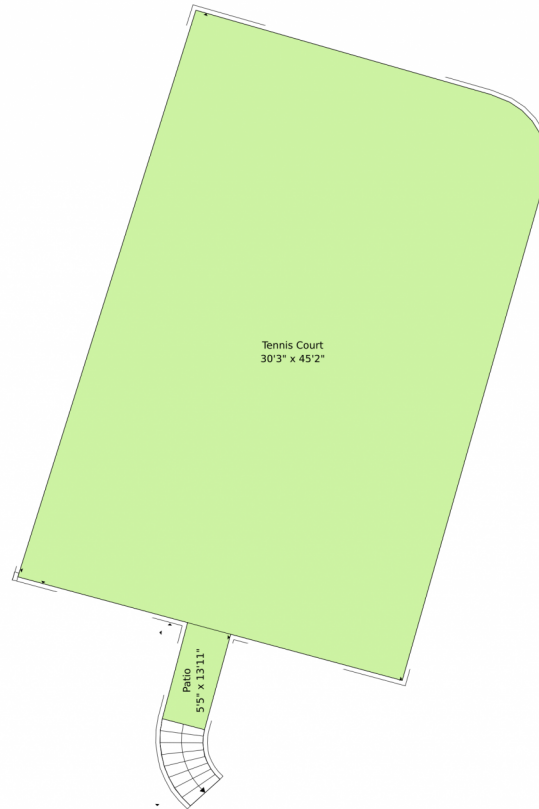


K.C. Golfinopoulos
720-750-2269
mountainrealtykc@gmail.com
<https://mountainrealtycolorado.com/>



Scan code
for more
property
details

15073 South Wandcrest Drive, Pine, CO 80470 – Tennis Court



TOTAL: 5845 sq. ft

Basement: 940 sq. ft, 1st floor: 3032 sq. ft, 2nd floor: 1211 sq. ft, 3rd floor: 0 sq. ft, 4th floor: 372 sq. ft, 5th floor: 290 sq. ft
EXCLUDED AREAS: GARAGE: 597 sq. ft, UTILITY: 57 sq. ft, PATIO: 2757 sq. ft,
DECK: 1391 sq. ft, OPEN TO BELOW: 724 sq. ft, STORAGE: 875 sq. ft,
WALLS: 488 sq. ft

Floor Plan Created By V1photos.com. Measurements Deamed Highly Reliable But Not Guaranteed.



Disclaimer: Sizes and Dimensions are Approximate, Actual May Vary.



K.C. Golfinopoulos
720-750-2269
mountainrealtykc@gmail.com
<https://mountainrealtycolorado.com/>



15073 South Wandcrest Drive, Pine, CO 80470 – All Levels



TOTAL: 5845 sq. ft
Basement: 940 sq. ft, 1st floor: 3032 sq. ft, 2nd floor: 1211 sq. ft, 3rd floor: 0 sq. ft, 4th floor: 372 sq. ft, 5th floor: 290 sq. ft
EXCLUDED AREAS: GARAGE: 597 sq. ft, UTILITY: 57 sq. ft, PATIO: 2757 sq. ft,
DECK: 1391 sq. ft, OPEN TO BELOW: 724 sq. ft, STORAGE: 875 sq. ft,
WALLS: 488 sq. ft

Floor Plan Created By V1photos.com. Measurements Deamed Highly Reliable But Not Guaranteed.



Disclaimer: Sizes and Dimensions are Approximate, Actual May Vary.



K.C. Golfinopoulos
720-750-2269
mountainrealtykc@gmail.com
<https://mountainrealtycolorado.com/>



Scan code
for more
property
details

