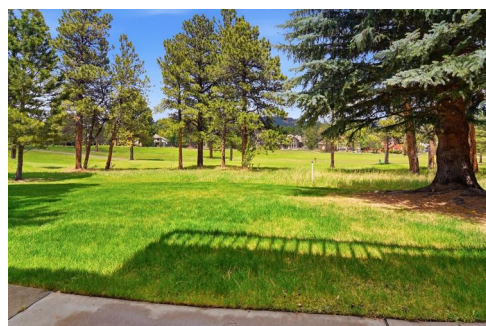


2294 Augusta Drive
Evergreen, CO 80439

MLS # 8880537
PRICE \$1,215,000

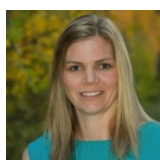
Impeccably maintained mountain townhome featuring a main floor primary suite!



 Single Family  3750 SQFT  4 Beds  3/1 Baths  2 Car  0.05 Acre

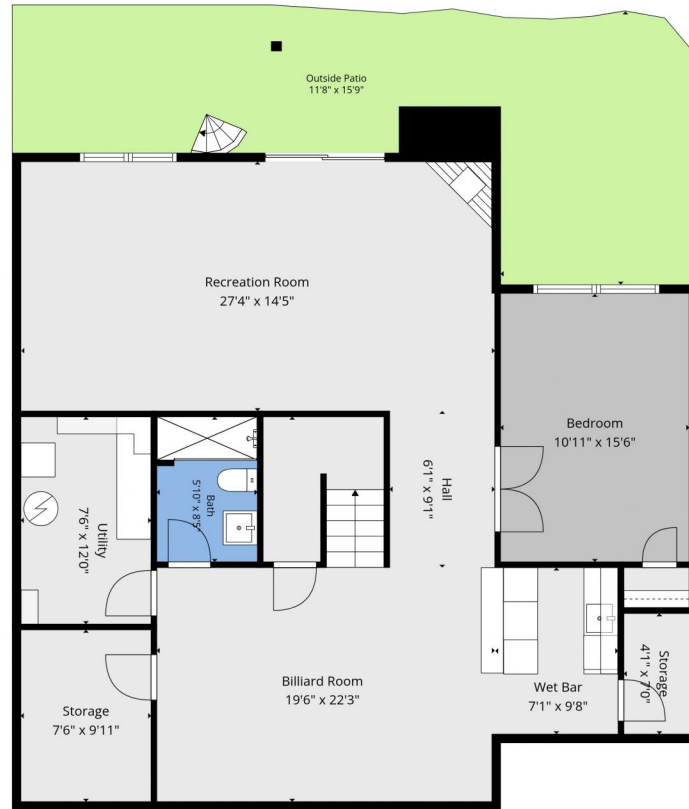
PROPERTY DETAILS

Welcome to this beautifully maintained mountain townhome with a main floor primary suite, backing directly to hole #2 at Hiwan Golf Club. Spanning 3,742 sq ft, it features 4 bedrooms and 3.5 bathrooms, including two upstairs and one in the lower level. The bright open floor plan offers stunning golf course views and hickory flooring. The walkout lower level boasts a family room, game area, wet bar, and wine cellar, ideal for entertaining. Recent updates include a remodeled kitchen with custom cabinetry and renovated bathrooms. The primary suite has a steam shower and dual closets. Enjoy outdoor living on the main-level deck or covered lower patio. The oversized 625 sq ft garage provides ample storage. Located in a well-managed 22-unit community, it offers easy access to shopping, schools, and amenities.



Julie Burton
970-396-7435
julieb.celladora@gmail.com





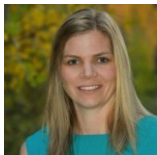
TOTAL: 3644 sq. ft

Basement: 1121 sq. ft, 1st floor: 1559 sq. ft, 2nd floor: 964 sq. ft
EXCLUDED AREAS: STORAGE: 106 sq. ft, UTILITY: 90 sq. ft, OUTSIDE PATIO: 404 sq. ft,
GARAGE: 552 sq. ft, DECK: 291 sq. ft, FRONT PORCH: 190 sq. ft,
FIREPLACE: 21 sq. ft, OPEN TO BELOW: 242 sq. ft, WALLS: 290 sq. ft

Floor Plan Created By V1photos.com. Measurements Deamed Highly Reliable But Not Guaranteed.



Disclaimer: Sizes and Dimensions are Approximate, Actual May Vary.



Julie Burton
970-396-7435
julieb.celladora@gmail.com





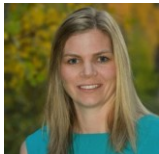
TOTAL: 3644 sq. ft

Basement: 1121 sq. ft, 1st floor: 1559 sq. ft, 2nd floor: 964 sq. ft
EXCLUDED AREAS: STORAGE: 106 sq. ft, UTILITY: 90 sq. ft, OUTSIDE PATIO: 404 sq. ft,
GARAGE: 552 sq. ft, DECK: 291 sq. ft, FRONT PORCH: 190 sq. ft,
FIREPLACE: 21 sq. ft, OPEN TO BELOW: 242 sq. ft, WALLS: 290 sq. ft

Floor Plan Created By V1photos.com. Measurements Deamed Highly Reliable But Not Guaranteed.



Disclaimer: Sizes and Dimensions are Approximate, Actual May Vary.



Julie Burton
970-396-7435
julieb.celladora@gmail.com



Scan code
for more
property
details





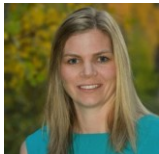
TOTAL: 3644 sq. ft

Basement: 1121 sq. ft, 1st floor: 1559 sq. ft, 2nd floor: 964 sq. ft
EXCLUDED AREAS: STORAGE: 106 sq. ft, UTILITY: 90 sq. ft, OUTSIDE PATIO: 404 sq. ft,
GARAGE: 552 sq. ft, DECK: 291 sq. ft, FRONT PORCH: 190 sq. ft,
FIREPLACE: 21 sq. ft, OPEN TO BELOW: 242 sq. ft, WALLS: 290 sq. ft

Floor Plan Created By V1photos.com. Measurements Deamed Highly Reliable But Not Guaranteed.



Disclaimer: Sizes and Dimensions are Approximate, Actual May Vary.



Julie Burton
970-396-7435
julieb.celladora@gmail.com



2294 Augusta Drive, Evergreen, CO 80439 – all_floors_2294_augusta_drive_evergreen_with_dim

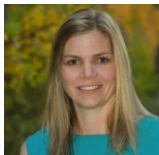


TOTAL: 3644 sq. ft
Basement: 1121 sq. ft, 1st floor: 1559 sq. ft, 2nd floor: 964 sq. ft
EXCLUDED AREAS: STORAGE: 106 sq. ft, UTILITY: 90 sq. ft, OUTSIDE PATIO: 404 sq. ft,
GARAGE: 552 sq. ft, DECK: 291 sq. ft, FRONT PORCH: 190 sq. ft,
FIREPLACE: 21 sq. ft, OPEN TO BELOW: 242 sq. ft, WALLS: 290 sq. ft

Floor Plan Created By V1photos.com. Measurements Deamed Highly Reliable But Not Guaranteed.



Disclaimer: Sizes and Dimensions are Approximate, Actual May Vary.



Julie Burton
970-396-7435
julieb.celladora@gmail.com



Scan code
for more
property
details