




 Single Family

 2950 SQFT

 4 Beds

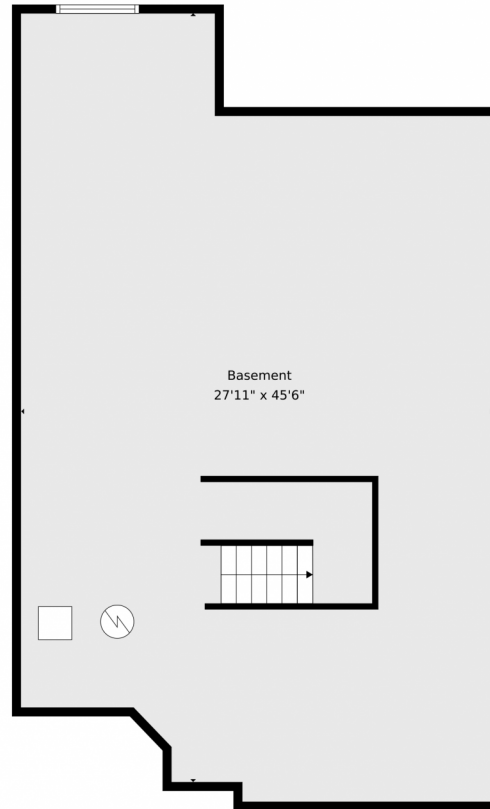
 4 Baths



**Taylor Haas**  
303-665-7368  
taylorh@coloradorpm.com  
<https://www.coloradorpm.com/available-rental-properties-denver>



# 12211 S Grass River Trail, Parker, CO 80134 – Lower Level



**TOTAL: 2969 sq. ft**  
Basement: 0 sq. ft, 1st floor: 1514 sq. ft, 2nd floor: 1455 sq. ft  
EXCLUDED AREAS: BASEMENT: 1154 sq. ft, GARAGE: 651 sq. ft, OPEN TO BELOW: 432 sq. ft,  
WALLS: 300 sq. ft

Floor Plan Created By V1photos.com. Measurements Deamed Highly Reliable But Not Guaranteed.



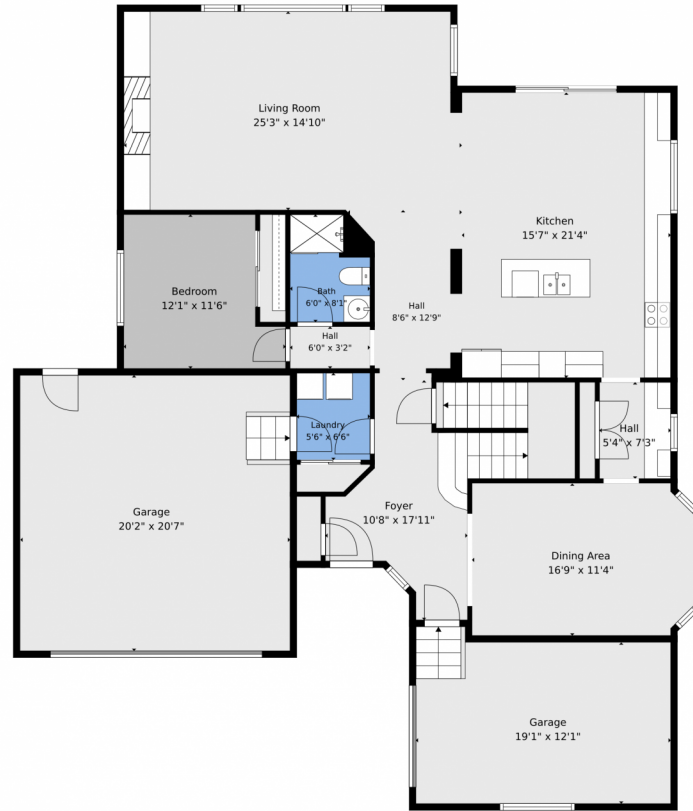
Disclaimer: Sizes and Dimensions are Approximate, Actual May Vary.



**Taylor Haas**  
303-665-7368  
taylorh@coloradorpm.com  
<https://www.coloradorpm.com/available-rental-properties-denver>



# 12211 S Grass River Trail, Parker, CO 80134 – Main



**TOTAL: 2969 sq. ft**  
Basement: 0 sq. ft, 1st floor: 1514 sq. ft, 2nd floor: 1455 sq. ft  
EXCLUDED AREAS: BASEMENT: 1154 sq. ft, GARAGE: 651 sq. ft, OPEN TO BELOW: 432 sq. ft,  
WALLS: 300 sq. ft

Floor Plan Created By V1photos.com. Measurements Deamed Highly Reliable But Not Guaranteed.



Disclaimer: Sizes and Dimensions are Approximate, Actual May Vary.



**Taylor Haas**  
303-665-7368  
taylorh@coloradorpm.com  
<https://www.coloradorpm.com/available-rental-properties-denver>



Scan code  
for more  
property  
details



# 12211 S Grass River Trail, Parker, CO 80134 – 2nd Level



**TOTAL: 2969 sq. ft**  
Basement: 0 sq. ft, 1st floor: 1514 sq. ft, 2nd floor: 1455 sq. ft  
EXCLUDED AREAS: BASEMENT: 1154 sq. ft, GARAGE: 651 sq. ft, OPEN TO BELOW: 432 sq. ft,  
WALLS: 300 sq. ft

Floor Plan Created By V1photos.com. Measurements Deamed Highly Reliable But Not Guaranteed.



Disclaimer: Sizes and Dimensions are Approximate, Actual May Vary.

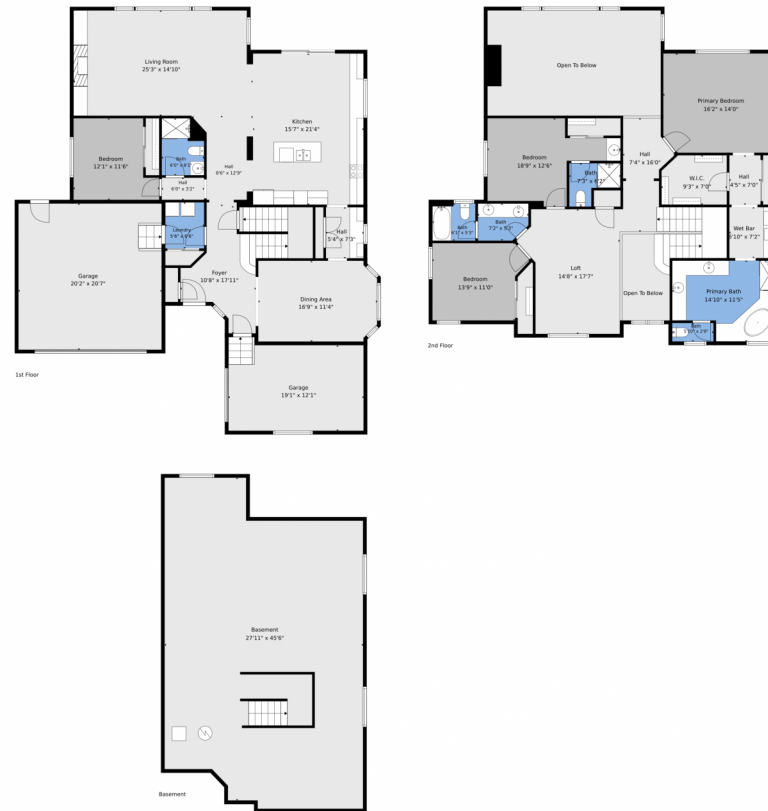


**Taylor Haas**  
303-665-7368  
taylorh@coloradopr.com  
<https://www.coloradopr.com/available-rental-properties-denver>



Scan code  
for more  
property  
details

# 12211 S Grass River Trail, Parker, CO 80134 – All Levels



**TOTAL: 2969 sq. ft**  
Basement: 0 sq. ft, 1st floor: 1514 sq. ft, 2nd floor: 1455 sq. ft  
EXCLUDED AREAS: BASEMENT: 1154 sq. ft, GARAGE: 651 sq. ft, OPEN TO BELOW: 432 sq. ft,  
WALLS: 300 sq. ft

Floor Plan Created By V1photos.com. Measurements Deamed Highly Reliable But Not Guaranteed.



Disclaimer: Sizes and Dimensions are Approximate, Actual May Vary.



**Taylor Haas**  
303-665-7368  
taylorh@coloradorpm.com  
<https://www.coloradorpm.com/available-rental-properties-denver>



Scan code  
for more  
property  
details

