



8450 London Lane  
Conifer, CO 80433

COMMUNITY: Black Mountain Ranch Estates

MLS # 4687447  
PRICE \$650,000



Single Family



1284 SQFT



2 Beds



1/1 Baths



2 Car



1.01 Acre

## PROPERTY DETAILS

Welcome to your Rocky Mountain Retreat with stunning views! This updated office/studio outbuilding is perfect for remote work. Enter the home via a covered stairway into a foyer and living area featuring vaulted ceilings and large windows. Enjoy warmth from the woodburning stove or entertain on the spacious front deck. The new kitchen boasts quartz countertops and new modern appliances, with access to a secluded back patio for wildlife viewing. The main level includes a guest bedroom and laundry closet with a new washer/dryer. The upper-level primary suite offers a private deck and ample storage. Additional features include a 2-car garage, extra storage above, and a newly graded driveway. Enjoy worry-free living with a new furnace and hot water heater. Conveniently located near hiking trails and local amenities. Polaris ATV included with full price offer!



**Carol Brooks**

303-335-6689

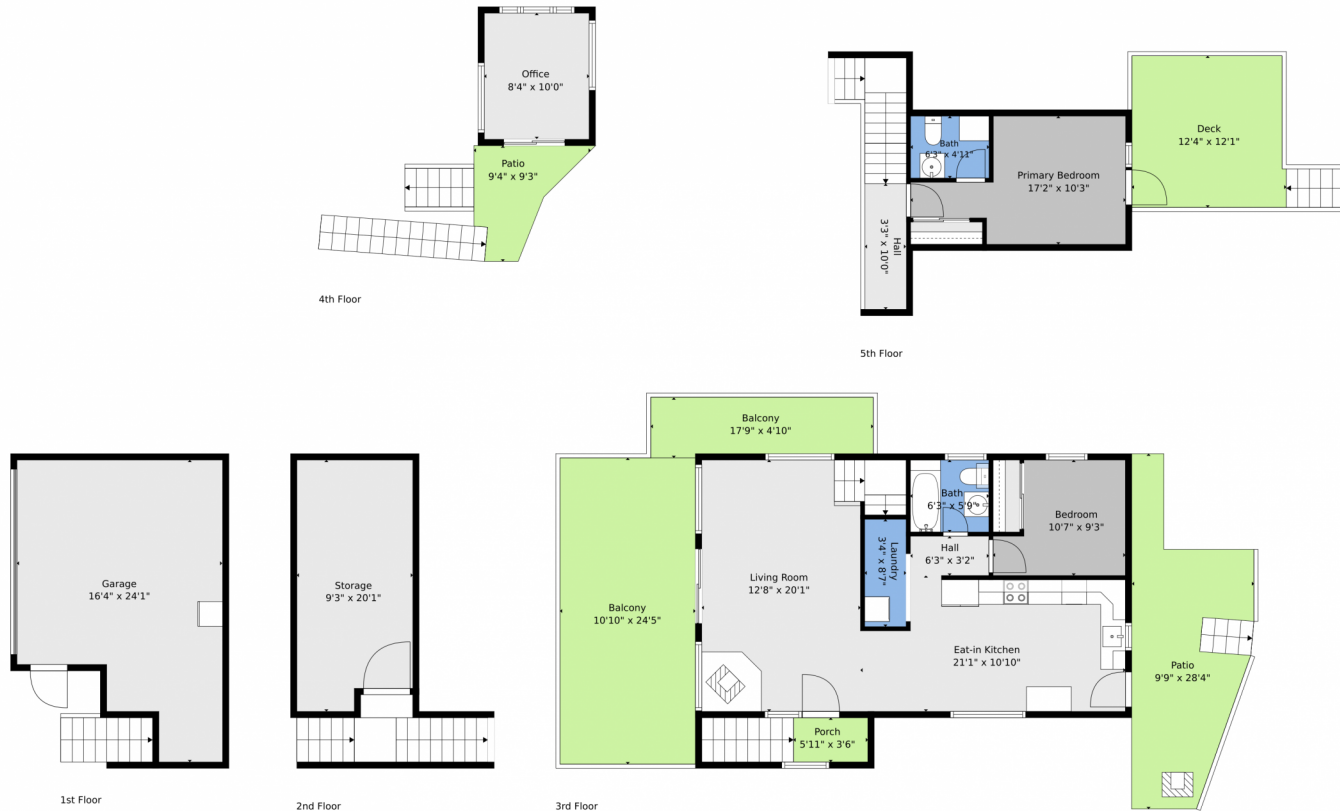
apsolut@msn.com

<https://www.applicable-solutions-realestate.com/>

Scan code  
for more  
property  
details



# 8450 London Lane, Conifer, CO 80433 – All Levels



**TOTAL: 984 sq. ft**  
 1st floor: 0 sq. ft, 2nd floor: 0 sq. ft, 3rd floor: 677 sq. ft, 4th floor: 84 sq. ft, 5th floor: 223 sq. ft  
 EXCLUDED AREAS: GARAGE: 322 sq. ft, STORAGE: 177 sq. ft, PORCH: 47 sq. ft,  
 PATIO: 260 sq. ft, BALCONY: 345 sq. ft, LOW CEILING: 30 sq. ft,  
 DECK: 146 sq. ft, WALLS: 192 sq. ft

Floor Plan Created By V1photos.com. Measurements Deamed Highly Reliable But Not Guaranteed.



Disclaimer: Sizes and Dimensions are Approximate, Actual May Vary.



**Carol Brooks**  
 303-335-6689  
 apsolut@msn.com  
<https://www.applicablesolutionsrealestate.com/>



Scan code  
 for more  
 property  
 details

