

COMPASS

1120 Shrider Road  
Colorado Springs, CO 80920



Single Family



3000 SQFT



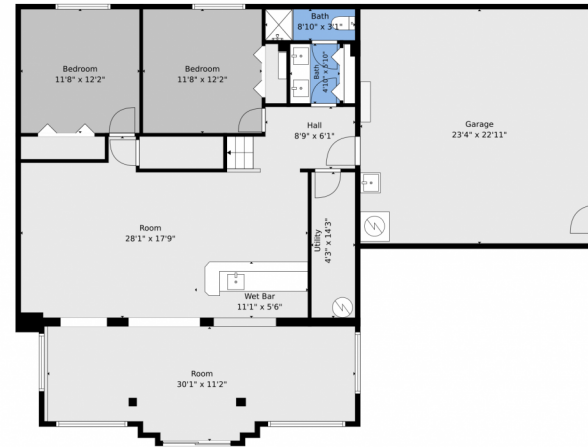
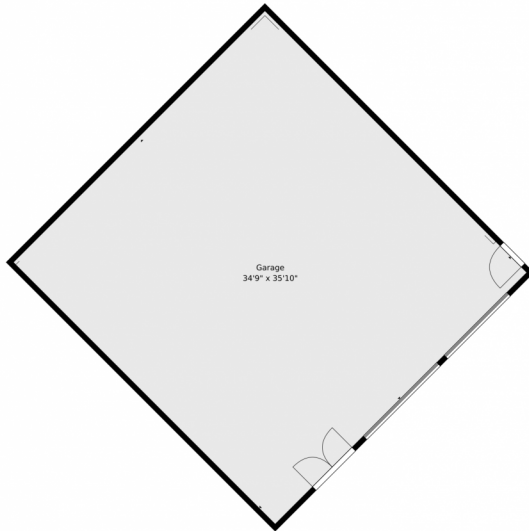
**Kyle Foster**  
303-507-1403  
kyle.foster@compass.com



Scan code  
for more  
property  
details



# 1120 Shrider Road, Colorado Springs, CO 80920 – Lower Level



**TOTAL: 4959 sq. ft**

1st floor: 2520 sq. ft, 2nd floor: 1365 sq. ft, 3rd floor: 1074 sq. ft  
EXCLUDED AREAS: UTILITY: 61 sq. ft, GARAGE: 536 sq. ft, DECK: 544 sq. ft,  
PORCH: 227 sq. ft, PATIO: 1198 sq. ft, BAY WINDOW: 3 sq. ft,  
OPEN TO BELOW: 286 sq. ft, WALLS: 345 sq. ft

Floor Plan Created By V1photos.com. Measurements Deamed Highly Reliable But Not Guaranteed.



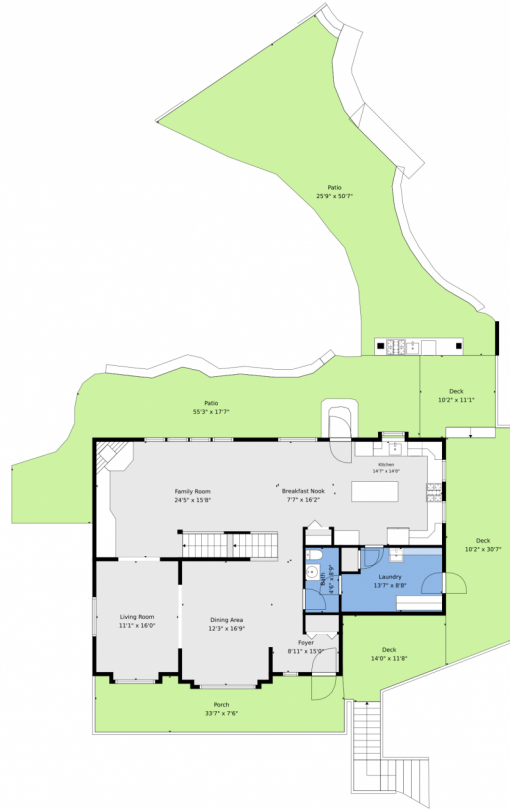
Disclaimer: Sizes and Dimensions are Approximate, Actual May Vary.



**Kyle Foster**  
303-507-1403  
kyle.foster@compass.com



# 1120 Shrider Road, Colorado Springs, CO 80920 – Main level



**TOTAL: 4959 sq. ft**

1st floor: 2520 sq. ft, 2nd floor: 1365 sq. ft, 3rd floor: 1074 sq. ft  
EXCLUDED AREAS: UTILITY: 61 sq. ft, GARAGE: 536 sq. ft, DECK: 544 sq. ft,  
PORCH: 227 sq. ft, PATIO: 1198 sq. ft, BAY WINDOW: 3 sq. ft,  
OPEN TO BELOW: 286 sq. ft, WALLS: 345 sq. ft

Floor Plan Created By V1photos.com. Measurements Deamed Highly Reliable But Not Guaranteed.

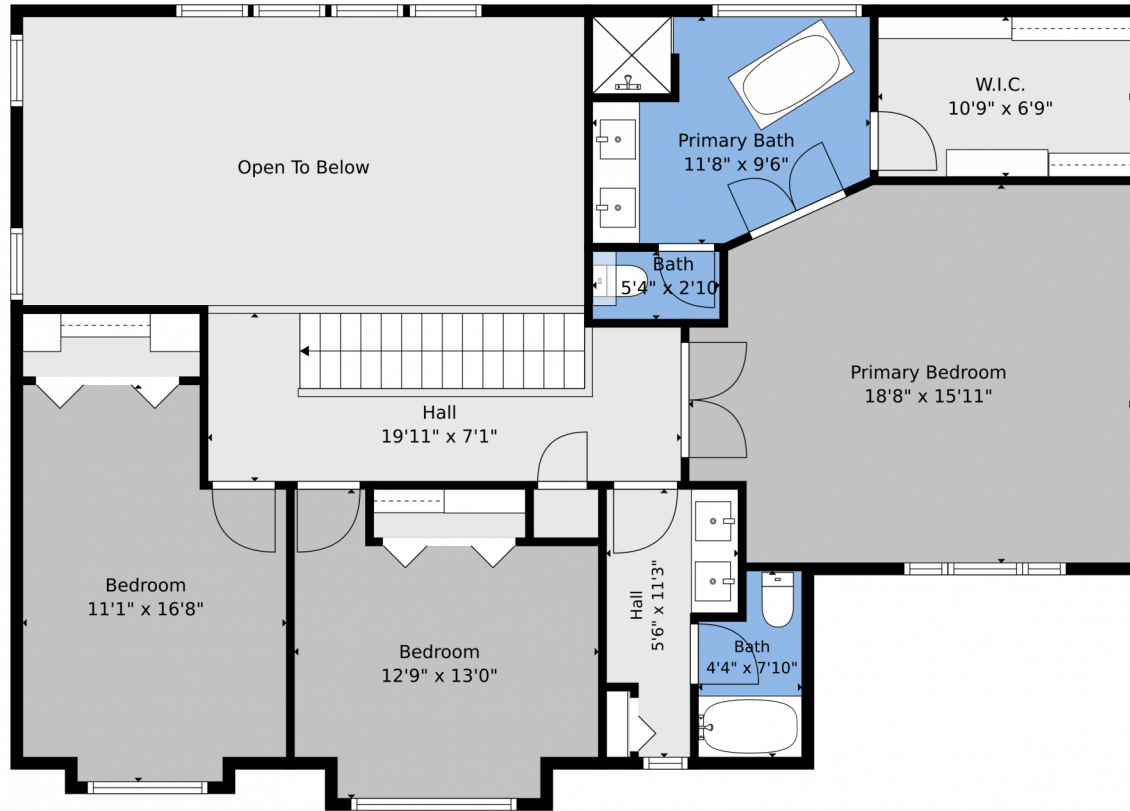
Disclaimer: Sizes and Dimensions are Approximate, Actual May Vary.



**Kyle Foster**  
303-507-1403  
kyle.foster@compass.com



1120 Shrider Road, Colorado Springs, CO 80920 – Upper Level



**TOTAL: 4959 sq. ft**  
1st floor: 2520 sq. ft, 2nd floor: 1365 sq. ft, 3rd floor: 1074 sq. ft  
EXCLUDED AREAS: UTILITY: 61 sq. ft, GARAGE: 536 sq. ft, DECK: 544 sq. ft,  
PORCH: 227 sq. ft, PATIO: 1198 sq. ft, BAY WINDOW: 3 sq. ft,  
OPEN TO BELOW: 286 sq. ft, WALLS: 345 sq. ft

Floor Plan Created By V1photos.com. Measurements Deamed Highly Reliable But Not Guaranteed.



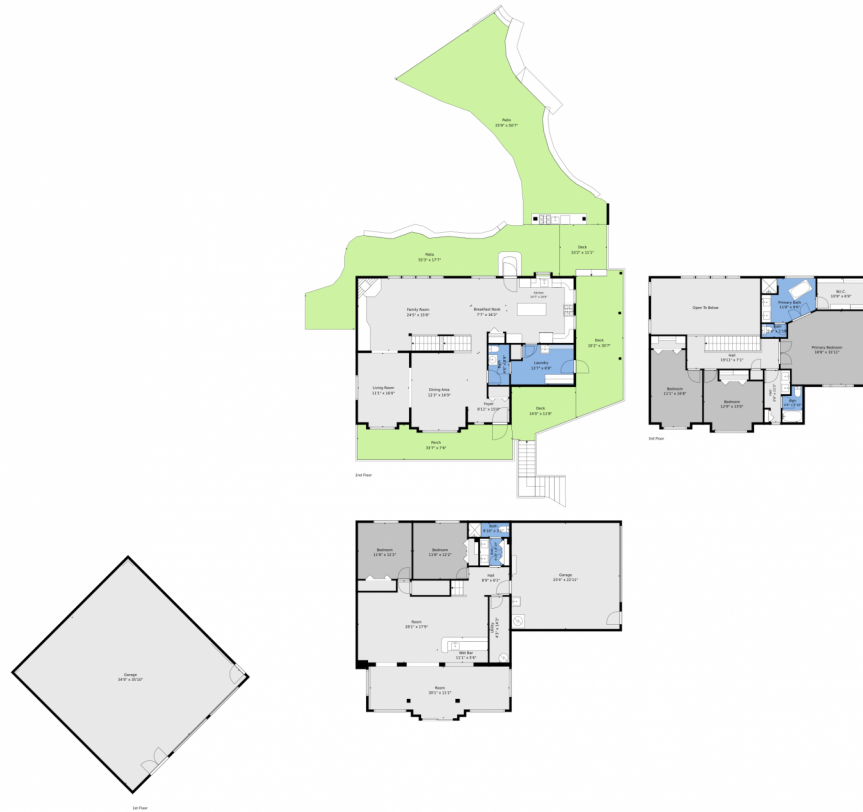
Disclaimer: Sizes and Dimensions are Approximate, Actual May Vary.



**Kyle Foster**  
303-507-1403  
kyle.foster@compass.com



# 1120 Shrider Road, Colorado Springs, CO 80920 – All Levels



**TOTAL: 4959 sq. ft**  
1st floor: 2520 sq. ft, 2nd floor: 1365 sq. ft, 3rd floor: 1074 sq. ft  
EXCLUDED AREAS: UTILITY: 61 sq. ft, GARAGE: 536 sq. ft, DECK: 544 sq. ft,  
PORCH: 227 sq. ft, PATIO: 1198 sq. ft, BAY WINDOW: 3 sq. ft,  
OPEN TO BELOW: 286 sq. ft, WALLS: 345 sq. ft

Floor Plan Created By V1photos.com. Measurements Deamed Highly Reliable But Not Guaranteed.



Disclaimer: Sizes and Dimensions are Approximate, Actual May Vary.



**Kyle Foster**  
303-507-1403  
kyle.foster@compass.com

