

Colorado Living at its Finest: Elevated, Connected, and Truly Unforgettable



Single Family



5051 SQFT



6 Beds



5/1 Baths



3 Car



0.21 Acre

## PROPERTY DETAILS

This stunning 5,000 sf residence sits on one of the best cul-de-sacs in the community – a quiet, premium location that satisfies a wide variety of lifestyles while offering exceptional privacy and tranquility. What truly sets this exceptional property apart are its priceless views from the backyard oasis looking out over protected open space to Red Rocks beyond. Imagine waking each morning to sweeping, unobstructed Red Rocks vistas, stepping seamlessly from your door onto pristine trails, and enjoying that rare, effortless connection to Colorado’s iconic natural beauty every single day. Adding to the resort-style living, the community features a stunning infinity pool and a breathtaking clubhouse retreat—affectionately dubbed “the castle” by the neighborhood children—creating a magical gathering place for families and friends alike. This is Colorado living at its finest: elevated, connected, and truly unforgettable.



**Libby Anglin**

310-621-9904

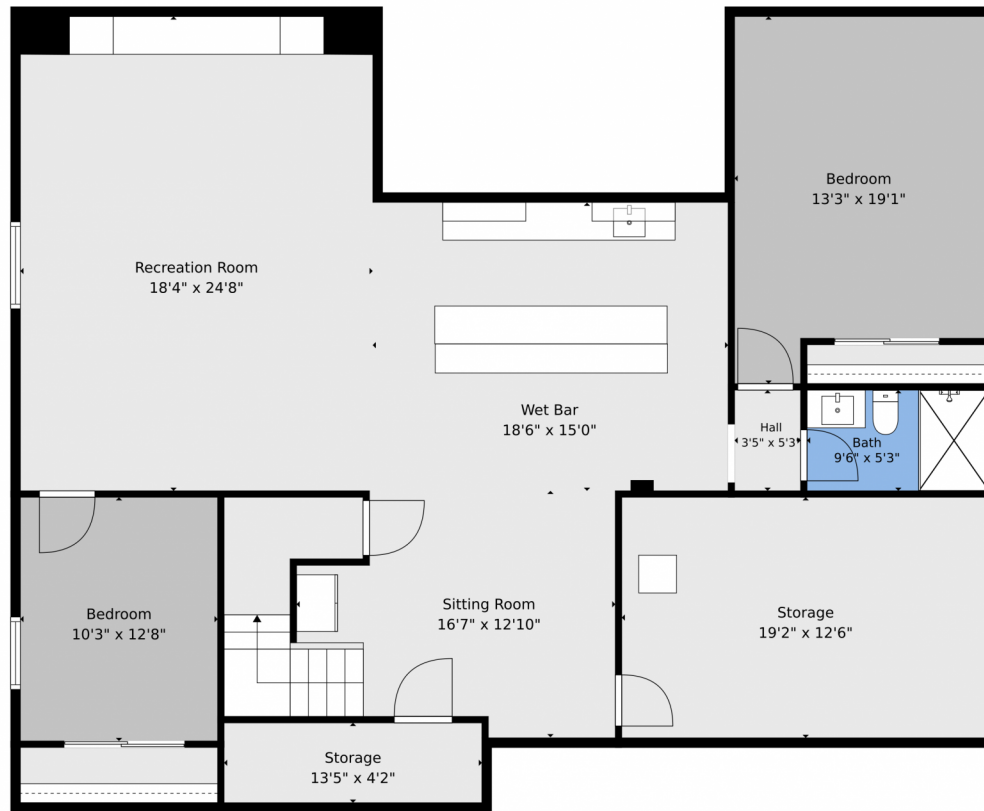
libby.anglin@bluezone5280.com

<https://bluezone5280.com/>

Scan code  
for more  
property  
details



# 2383 S Lupine Way, Lakewood, CO 80228 – Lower Level



**TOTAL: 4965 sq. ft**

Basement: 1498 sq. ft, 1st floor: 2662 sq. ft, 2nd floor: 805 sq. ft  
EXCLUDED AREAS: STORAGE: 296 sq. ft, PORCH: 205 sq. ft, PATIO: 730 sq. ft,  
COVERED PATIO: 157 sq. ft, BALCONY: 49 sq. ft, OPEN TO BELOW: 593 sq. ft,  
WALLS: 363 sq. ft

Floor Plan Created By V1photos.com. Measurements Deamed Highly Reliable But Not Guaranteed.



Disclaimer: Sizes and Dimensions are Approximate, Actual May Vary.



**Libby Anglin**  
310-621-9904  
libby.anglin@bluezone5280.com  
<https://bluezone5280.com/>





**TOTAL: 4965 sq. ft**

Basement: 1498 sq. ft, 1st floor: 2662 sq. ft, 2nd floor: 805 sq. ft  
EXCLUDED AREAS: STORAGE: 296 sq. ft, PORCH: 205 sq. ft, PATIO: 730 sq. ft,  
COVERED PATIO: 157 sq. ft, BALCONY: 49 sq. ft, OPEN TO BELOW: 593 sq. ft,  
WALLS: 363 sq. ft

Floor Plan Created By V1photos.com. Measurements Deamed Highly Reliable But Not Guaranteed.



Disclaimer: Sizes and Dimensions are Approximate, Actual May Vary.



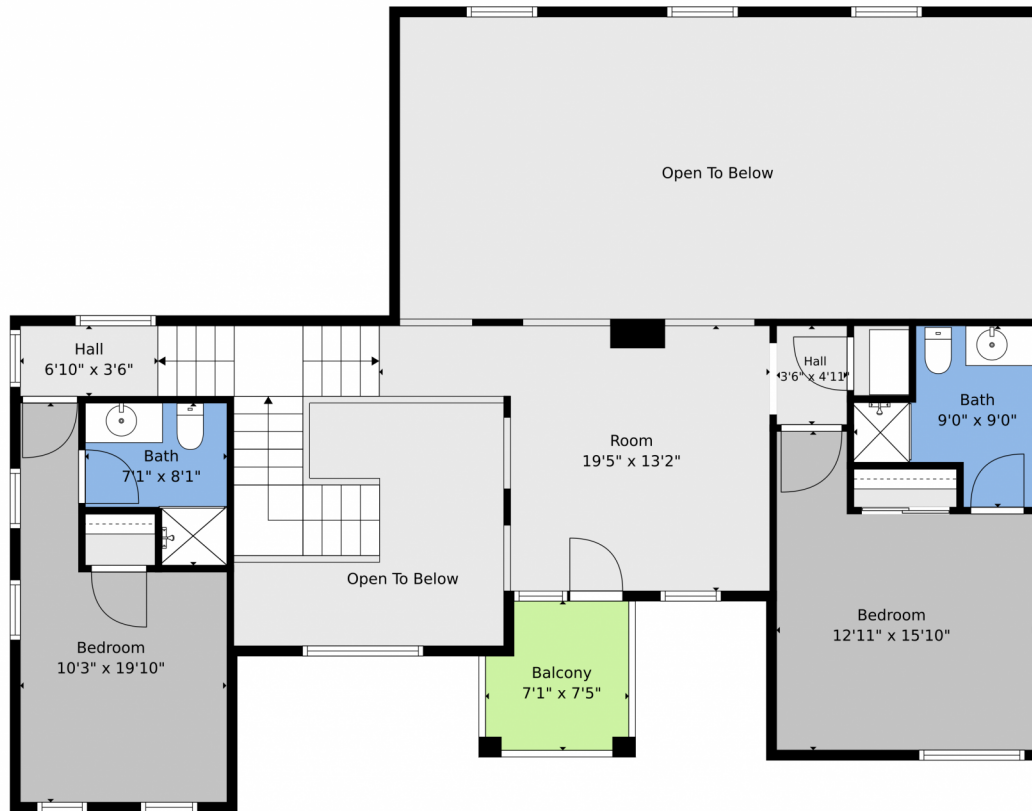
**Libby Anglin**  
310-621-9904  
libby.anglin@bluezone5280.com  
<https://bluezone5280.com/>



Scan code  
for more  
property  
details



2383 S Lupine Way, Lakewood, CO 80228 – 2nd Level



**TOTAL: 4965 sq. ft**

Basement: 1498 sq. ft, 1st floor: 2662 sq. ft, 2nd floor: 805 sq. ft  
EXCLUDED AREAS: STORAGE: 296 sq. ft, PORCH: 205 sq. ft, PATIO: 730 sq. ft,  
COVERED PATIO: 157 sq. ft, BALCONY: 49 sq. ft, OPEN TO BELOW: 593 sq. ft,  
WALLS: 363 sq. ft

Floor Plan Created By V1photos.com. Measurements Deamed Highly Reliable But Not Guaranteed.



Disclaimer: Sizes and Dimensions are Approximate, Actual May Vary.



**Libby Anglin**  
310-621-9904  
libby.anglin@bluezone5280.com  
<https://bluezone5280.com/>



# 2383 S Lupine Way, Lakewood, CO 80228 – All Levels



**TOTAL: 4965 sq. ft**  
Basement: 1498 sq. ft, 1st floor: 2662 sq. ft, 2nd floor: 805 sq. ft,  
EXCLUDED AREAS: STORAGE: 296 sq. ft, PORCH: 205 sq. ft, PATIO: 730 sq. ft,  
COVERED PATIO: 157 sq. ft, BALCONY: 49 sq. ft, OPEN TO BELOW: 593 sq. ft,  
WALLS: 363 sq. ft

Floor Plan Created By V1photos.com. Measurements Deamed Highly Reliable But Not Guaranteed.



Disclaimer: Sizes and Dimensions are Approximate, Actual May Vary.



**Libby Anglin**  
310-621-9904  
libby.anglin@bluezone5280.com  
<https://bluezone5280.com/>



Scan code  
for more  
property  
details

