



331 East Simpson Street
Lafayette, CO 80026
COMMUNITY: Simpson Old Town



331 East Simpson Street, Lafayette, CO 80026 - Entry Level



Townhouse



1839 SQFT



3 Beds



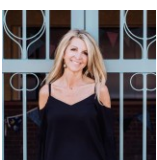
3/1 Baths



2 Car



0.02 Acre



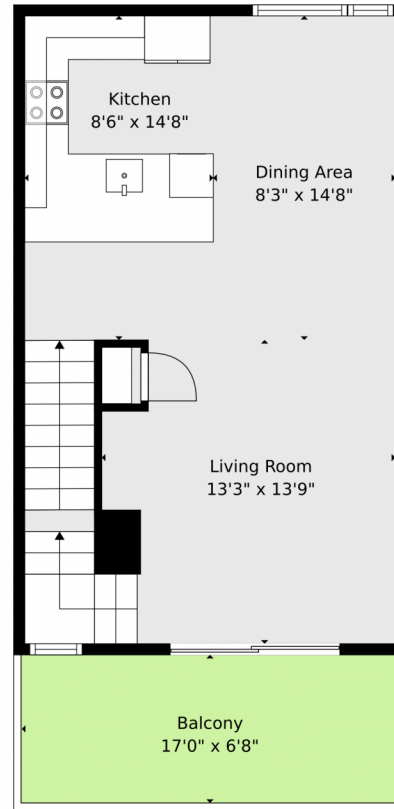
Christy Hepp
303-910-5393
cnishi1068@msn.com
<https://christysellscolorado.com>



Scan code
for more
property
details



331 East Simpson Street, Lafayette, CO 80026 – Main Level



TOTAL: 1846 sq. ft
Basement: 417 sq. ft, 1st floor: 466 sq. ft, 2nd floor: 474 sq. ft, 3rd floor: 489 sq. ft
EXCLUDED AREAS: UTILITY: 56 sq. ft, PORCH: 55 sq. ft, BALCONY: 114 sq. ft,
WALLS: 150 sq. ft

Floor Plan Created By V1photos.com. Measurements Deamed Highly Reliable But Not Guaranteed.



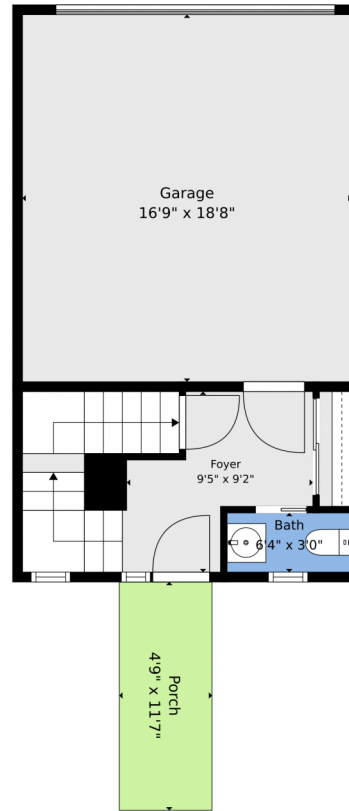
Disclaimer: Sizes and Dimensions are Approximate, Actual May Vary.



Christy Hepp
303-910-5393
cnishi1068@msn.com
<https://christysellscolorado.com>



331 East Simpson Street, Lafayette, CO 80026 — Entry Level



TOTAL: 1846 sq. ft

Basement: 417 sq. ft, 1st floor: 466 sq. ft, 2nd floor: 474 sq. ft, 3rd floor: 489 sq. ft
EXCLUDED AREAS: UTILITY: 56 sq. ft, PORCH: 55 sq. ft, BALCONY: 114 sq. ft,
WALLS: 150 sq. ft

Floor Plan Created By V1photos.com. Measurements Deamed Highly Reliable But Not Guaranteed.



Disclaimer: Sizes and Dimensions are Approximate, Actual May Vary.



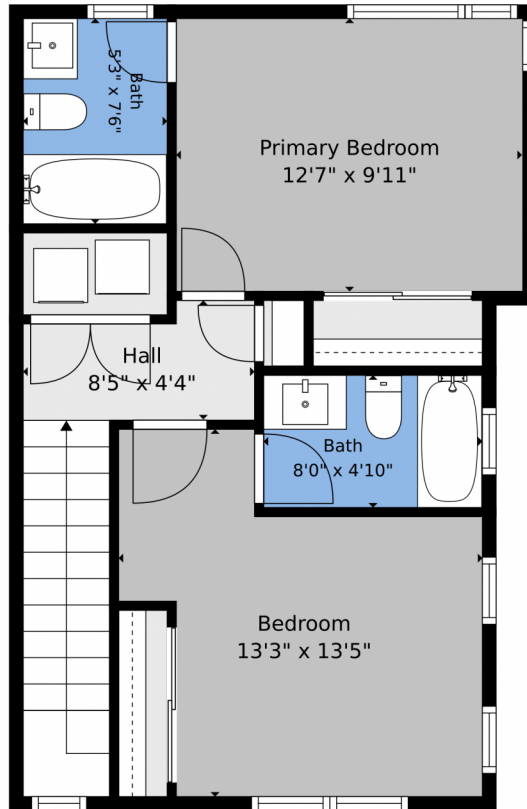
Christy Hepp
303-910-5393
cnishi1068@msn.com
<https://christysellscolorado.com>



Scan code
for more
property
details



331 East Simpson Street, Lafayette, CO 80026 – Upper Level



TOTAL: 1846 sq. ft
Basement: 417 sq. ft, 1st floor: 466 sq. ft, 2nd floor: 474 sq. ft, 3rd floor: 489 sq. ft
EXCLUDED AREAS: UTILITY: 56 sq. ft, PORCH: 55 sq. ft, BALCONY: 114 sq. ft,
WALLS: 150 sq. ft

Floor Plan Created By V1photos.com. Measurements Deamed Highly Reliable But Not Guaranteed.



Disclaimer: Sizes and Dimensions are Approximate, Actual May Vary.



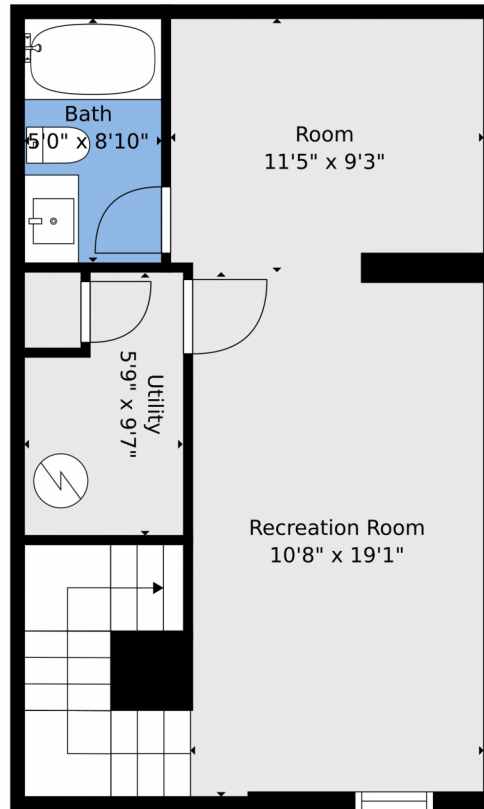
Christy Hepp
303-910-5393
cnishi1068@msn.com
<https://christysellscolorado.com>



Scan code
for more
property
details



331 East Simpson Street, Lafayette, CO 80026 — Lower Level



TOTAL: 1846 sq. ft

Basement: 417 sq. ft, 1st floor: 466 sq. ft, 2nd floor: 474 sq. ft, 3rd floor: 489 sq. ft
EXCLUDED AREAS: UTILITY: 56 sq. ft, PORCH: 55 sq. ft, BALCONY: 114 sq. ft,
WALLS: 150 sq. ft

Floor Plan Created By V1photos.com. Measurements Deamed Highly Reliable But Not Guaranteed.



Disclaimer: Sizes and Dimensions are Approximate, Actual May Vary.



Christy Hepp
303-910-5393
cnishi1068@msn.com
<https://christysellscolorado.com>



331 East Simpson Street, Lafayette, CO 80026 – All Levels



TOTAL: 1846 sq. ft
Basement: 417 sq. ft, 1st floor: 466 sq. ft, 2nd floor: 474 sq. ft, 3rd floor: 489 sq. ft
EXCLUDED AREAS: UTILITY: 56 sq. ft, PORCH: 55 sq. ft, BALCONY: 114 sq. ft,
WALLS: 150 sq. ft

Floor Plan Created By V1photos.com. Measurements Deamed Highly Reliable But Not Guaranteed.



Disclaimer: Sizes and Dimensions are Approximate, Actual May Vary.



Christy Hepp
303-910-5393
cnishi1068@msn.com
<https://christysellscolorado.com>



Scan code
for more
property
details

