



198 Park Avenue
 Pine, CO 80470
 COMMUNITY: Wandcrest Estates

MLS # 4746083
 PRICE \$1,000,000

The view you've been looking for.



Single Family 3600 SQFT 4 Beds 2/1 Baths 4 Car 2 Acre

PROPERTY DETAILS

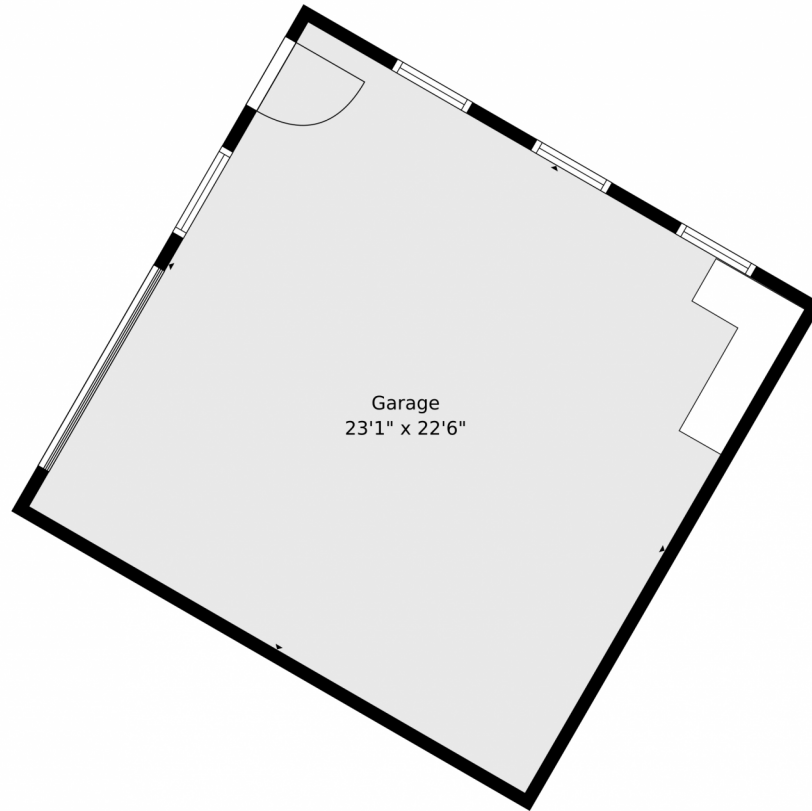
Set on a scenic ridge in Pine, this inviting mountain home captures Sweeping Views of Buffalo Creek Wilderness and the Tarryall Mountains. Main floor living with 4 bedrooms (1 nonconforming) and 3 bathrooms, this home offers a comfortable and functional layout designed for both everyday living and mountain getaways. The setting brings together privacy, fresh mountain air, and endless views that showcases the natural beauty of the area. A standout feature of the property is the exceptional garage setup, including a 2-car attached garage and a 2-car detached garage. Perfect for vehicles, storage, hobbies, workshop use, or all of the above. Whether you're looking for a primary residence, a mountain retreat, or a home with room for projects and gear, this property delivers flexibility in a beautiful foothills location. Easy living with a household use well, 4 bedroom septic, paved driveway, composite decking, laundry on both levels and the most breathtaking views!



Jodi Dolph
 303-902-9968
 jodi.dolph@kw.com
<https://www.TheDolphTeam.com>



198 Park Avenue, Pine, CO 80470 – Detached Garage



TOTAL: 4346 sq. ft
1st floor: 523 sq. ft, 2nd floor: 1397 sq. ft, 3rd floor: 2426 sq. ft
EXCLUDED AREAS: STORAGE: 74 sq. ft, UTILITY: 47 sq. ft, DECK: 1833 sq. ft,
SHED: 76 sq. ft, PORCH: 80 sq. ft, WALLS: 296 sq. ft

Floor Plan Created By V1photos.com. Measurements Deamed Highly Reliable But Not Guaranteed.



Disclaimer: Sizes and Dimensions are Approximate, Actual May Vary.



Jodi Dolph
303-902-9968
jodi.dolph@kw.com
<https://www.TheDolphTeam.com>



198 Park Avenue, Pine, CO 80470 – Lower Level



TOTAL: 4346 sq. ft
1st floor: 523 sq. ft, 2nd floor: 1397 sq. ft, 3rd floor: 2426 sq. ft
EXCLUDED AREAS: STORAGE: 74 sq. ft, UTILITY: 47 sq. ft, DECK: 1833 sq. ft,
SHED: 76 sq. ft, PORCH: 80 sq. ft, WALLS: 296 sq. ft

Floor Plan Created By V1photos.com. Measurements Deamed Highly Reliable But Not Guaranteed.



Disclaimer: Sizes and Dimensions are Approximate, Actual May Vary.



Jodi Dolph
303-902-9968
jodi.dolph@kw.com
<https://www.TheDolphTeam.com>



Scan code
for more
property
details





TOTAL: 4346 sq. ft
1st floor: 523 sq. ft, 2nd floor: 1397 sq. ft, 3rd floor: 2426 sq. ft
EXCLUDED AREAS: STORAGE: 74 sq. ft, UTILITY: 47 sq. ft, DECK: 1833 sq. ft,
SHED: 76 sq. ft, PORCH: 80 sq. ft, WALLS: 296 sq. ft

Floor Plan Created By V1photos.com. Measurements Deamed Highly Reliable But Not Guaranteed.



Disclaimer: Sizes and Dimensions are Approximate, Actual May Vary.



Jodi Dolph
303-902-9968
jodi.dolph@kw.com
<https://www.TheDolphTeam.com>



Scan code
for more
property
details



198 Park Avenue, Pine, CO 80470 – All Levels



TOTAL: 4346 sq. ft
1st floor: 523 sq. ft, 2nd floor: 1397 sq. ft, 3rd floor: 2426 sq. ft
EXCLUDED AREAS: STORAGE: 74 sq. ft, UTILITY: 47 sq. ft, DECK: 1833 sq. ft,
SHED: 76 sq. ft, PORCH: 80 sq. ft, WALLS: 296 sq. ft

Floor Plan Created By V1photos.com. Measurements Deamed Highly Reliable But Not Guaranteed.



Disclaimer: Sizes and Dimensions are Approximate, Actual May Vary.



Jodi Dolph
303-902-9968
jodi.dolph@kw.com
<https://www.TheDolphTeam.com>



Scan code
for more
property
details

