




 Townhouse

 960 SQFT

 2 Beds

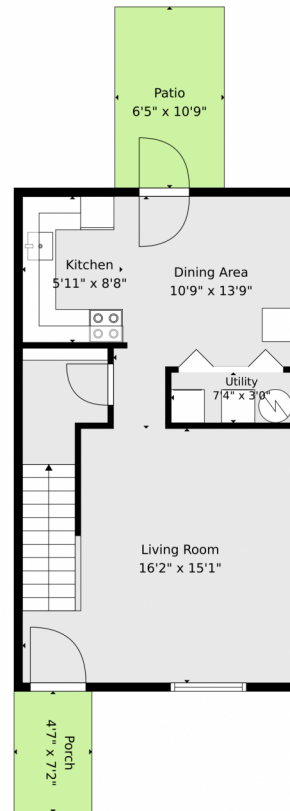
 1 Baths



**Taylor Haas**  
303-665-7368  
taylorh@coloradorpm.com  
<https://www.coloradorpm.com/available-rental-properties-denver>



5450 Alcott Street #5040, Denver, CO 80221 — Main



**TOTAL: 932 sq. ft**  
Basement: 466 sq. ft, 1st floor: 466 sq. ft  
EXCLUDED AREAS: PATIO: 70 sq. ft, PORCH: 33 sq. ft, WALLS: 78 sq. ft

Floor Plan Created By V1photos.com. Measurements Deamed Highly Reliable But Not Guaranteed.



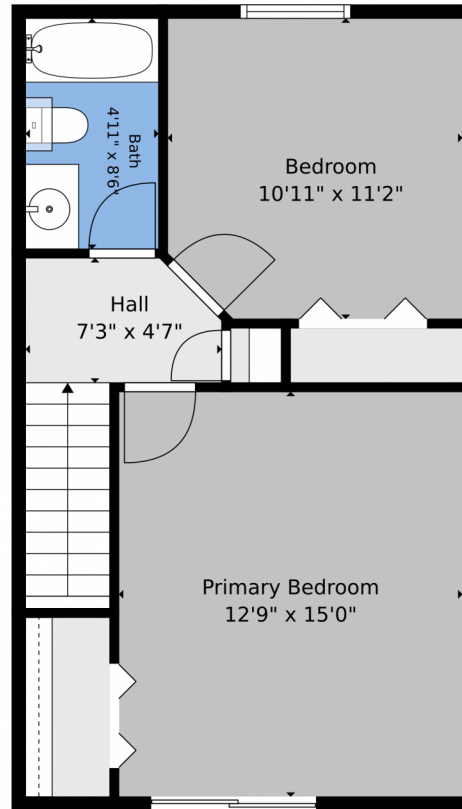
Disclaimer: Sizes and Dimensions are Approximate, Actual May Vary.



**Taylor Haas**  
303-665-7368  
taylorh@coloradorpm.com  
<https://www.coloradorpm.com/available-rental-properties-denver>



5450 Alcott Street #5040, Denver, CO 80221 – 2nd Level



**TOTAL: 932 sq. ft**  
Basement: 466 sq. ft, 1st floor: 466 sq. ft  
EXCLUDED AREAS: PATIO: 70 sq. ft, PORCH: 33 sq. ft, WALLS: 78 sq. ft

Floor Plan Created By V1photos.com. Measurements Deamed Highly Reliable But Not Guaranteed.



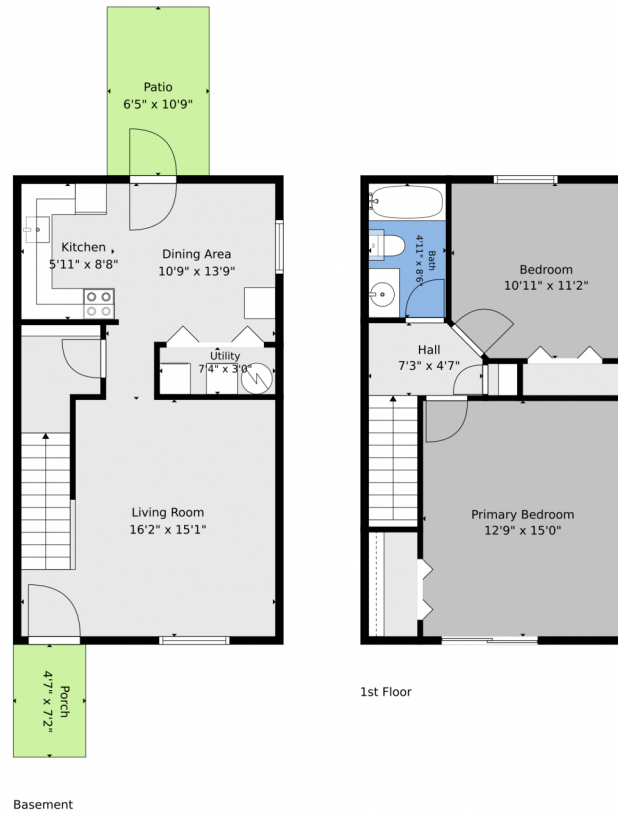
Disclaimer: Sizes and Dimensions are Approximate, Actual May Vary.



**Taylor Haas**  
303-665-7368  
taylorh@coloradorpm.com  
<https://www.coloradorpm.com/available-rental-properties-denver>



# 5450 Alcott Street #5040, Denver, CO 80221 – All Levels



**TOTAL: 932 sq. ft**  
Basement: 466 sq. ft, 1st floor: 466 sq. ft  
EXCLUDED AREAS: PATIO: 70 sq. ft, PORCH: 33 sq. ft, WALLS: 78 sq. ft

Floor Plan Created By V1photos.com. Measurements Deamed Highly Reliable But Not Guaranteed.



Disclaimer: Sizes and Dimensions are Approximate, Actual May Vary.



**Taylor Haas**  
303-665-7368  
taylorh@coloradorpm.com  
<https://www.coloradorpm.com/available-rental-properties-denver>

