




2800 Kalmia Ave #C113  
 Boulder, CO 80301  
 COMMUNITY: Aspen Grove

PRICE \$315,000



 Single Family

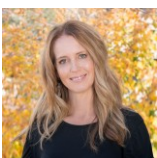
 880 SQFT

 2 Beds

 2 Baths

## PROPERTY DETAILS

Charming garden-level condo with a sunny south-facing patio in Aspen Grove Condos. Enjoy amenities like an Olympic-sized pool, hot tub, sauna, dog park, and more, plus a reserved parking space and low HOA fees. Conveniently located near shopping, dining, parks, and easy highway access. This move-in-ready unit features fresh paint, 2 bedrooms, and 2 baths, with low-maintenance laminate flooring throughout. The spacious living room has a wood-burning fireplace, and the open kitchen is perfect for entertaining. A large sliding door leads to the private patio. The primary suite boasts natural light and an updated 3/4 bath with a walk-in shower. Ample storage, a stackable washer/dryer, and a separate locked storage closet add to the appeal. Ideal for immediate move-in or personal updates.



**Terri Ellerington**

303-929-8116

terri@elevated-team.com

<https://www.remax.com/real-estate-agents/terri-ellerington-louisville-co/10205130>

Scan code  
for more  
property  
details

