



427 Brookside Drive  
 Bailey, CO 80421  
 COMMUNITY: Roland Valley

PRICE \$785,000



Single Family



2464 SQFT



4 Beds



2 Baths



4 Car



2.14 Acre

## PROPERTY DETAILS

This homesteaders dream offers the rare opportunity to live a more intentional lifestyle without sacrificing convenience. Positioned in Bailey's scenic Roland Valley, this property blends privacy, usable acreage, and practical infrastructure into a mountain retreat designed for buyers who want more than just a home — they want space to create, collect, garden, gather, and breathe. With a year-round stream, usable 2+ acre lot, oversized 4-car garage, RV metal outbuilding, barn, attached greenhouse, domestic well, and 3-bedroom septic system, this property appeals to buyers seeking a self-sufficient mountain lifestyle with flexibility for hobbies, recreation, vehicles, or animals. Unlike many mountain properties that feel steep or isolated, this home offers approachable mountain living with easy access to Hwy 285 and a straightforward commute to Denver. Professional Photos Coming Soon!



**Jodi Dolph**  
 303-902-9968  
 jodi.dolph@kw.com  
<https://www.TheDolphTeam.com>



Scan code  
 for more  
 property  
 details



# 427 Brookside Drive, Bailey, CO 80421 – Detached Garage



**TOTAL: 2242 sq. ft**  
1st floor: 0 sq. ft, 2nd floor: 0 sq. ft, 3rd floor: 1062 sq. ft, 4th floor: 1180 sq. ft  
EXCLUDED AREAS: SCREENED PORCH: 78 sq. ft, STORAGE: 305 sq. ft, GARAGE: 1080 sq. ft,  
CARPORT: 535 sq. ft, UNDEFINED: 26 sq. ft, UTILITY: 92 sq. ft,  
PORCH: 110 sq. ft, BALCONY: 356 sq. ft, DECK: 146 sq. ft,  
WALLS: 328 sq. ft

Floor Plan Created By V1photos.com. Measurements Deamed Highly Reliable But Not Guaranteed.



Disclaimer: Sizes and Dimensions are Approximate, Actual May Vary.



**Jodi Dolph**  
303-902-9968  
jodi.dolph@kw.com  
<https://www.TheDolphTeam.com>



427 Brookside Drive, Bailey, CO 80421 – Detached Garage



**TOTAL: 2242 sq. ft**  
1st floor: 0 sq. ft, 2nd floor: 0 sq. ft, 3rd floor: 1062 sq. ft, 4th floor: 1180 sq. ft  
EXCLUDED AREAS: SCREENED PORCH: 78 sq. ft, STORAGE: 305 sq. ft, GARAGE: 1080 sq. ft,  
CARPORT: 535 sq. ft, UNDEFINED: 26 sq. ft, UTILITY: 92 sq. ft,  
PORCH: 110 sq. ft, BALCONY: 356 sq. ft, DECK: 146 sq. ft,  
WALLS: 328 sq. ft

Floor Plan Created By V1photos.com. Measurements Deamed Highly Reliable But Not Guaranteed.



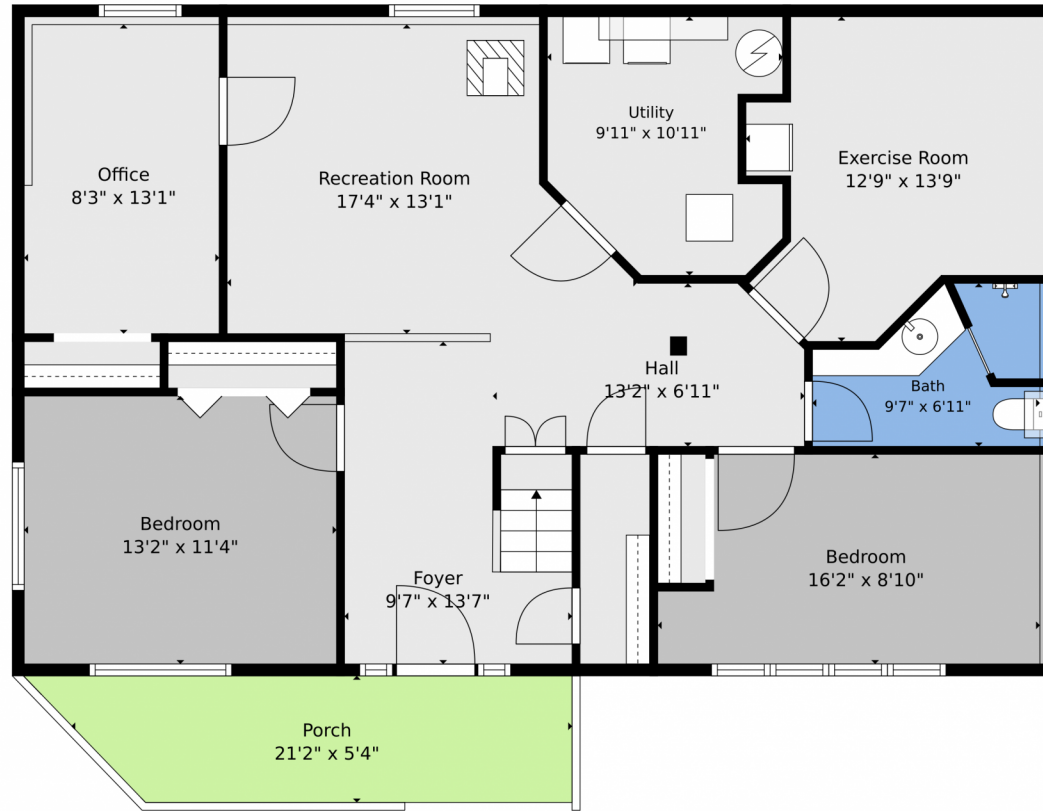
Disclaimer: Sizes and Dimensions are Approximate, Actual May Vary.



**Jodi Dolph**  
303-902-9968  
jodi.dolph@kw.com  
<https://www.TheDolphTeam.com>



# 427 Brookside Drive, Bailey, CO 80421 – Lower Level



**TOTAL: 2242 sq. ft**  
1st floor: 0 sq. ft, 2nd floor: 0 sq. ft, 3rd floor: 1062 sq. ft, 4th floor: 1180 sq. ft  
EXCLUDED AREAS: SCREENED PORCH: 78 sq. ft, STORAGE: 305 sq. ft, GARAGE: 1080 sq. ft,  
CARPORT: 535 sq. ft, UNDEFINED: 26 sq. ft, UTILITY: 92 sq. ft,  
PORCH: 110 sq. ft, BALCONY: 356 sq. ft, DECK: 146 sq. ft,  
WALLS: 328 sq. ft

Floor Plan Created By V1photos.com. Measurements Deamed Highly Reliable But Not Guaranteed.



Disclaimer: Sizes and Dimensions are Approximate, Actual May Vary.

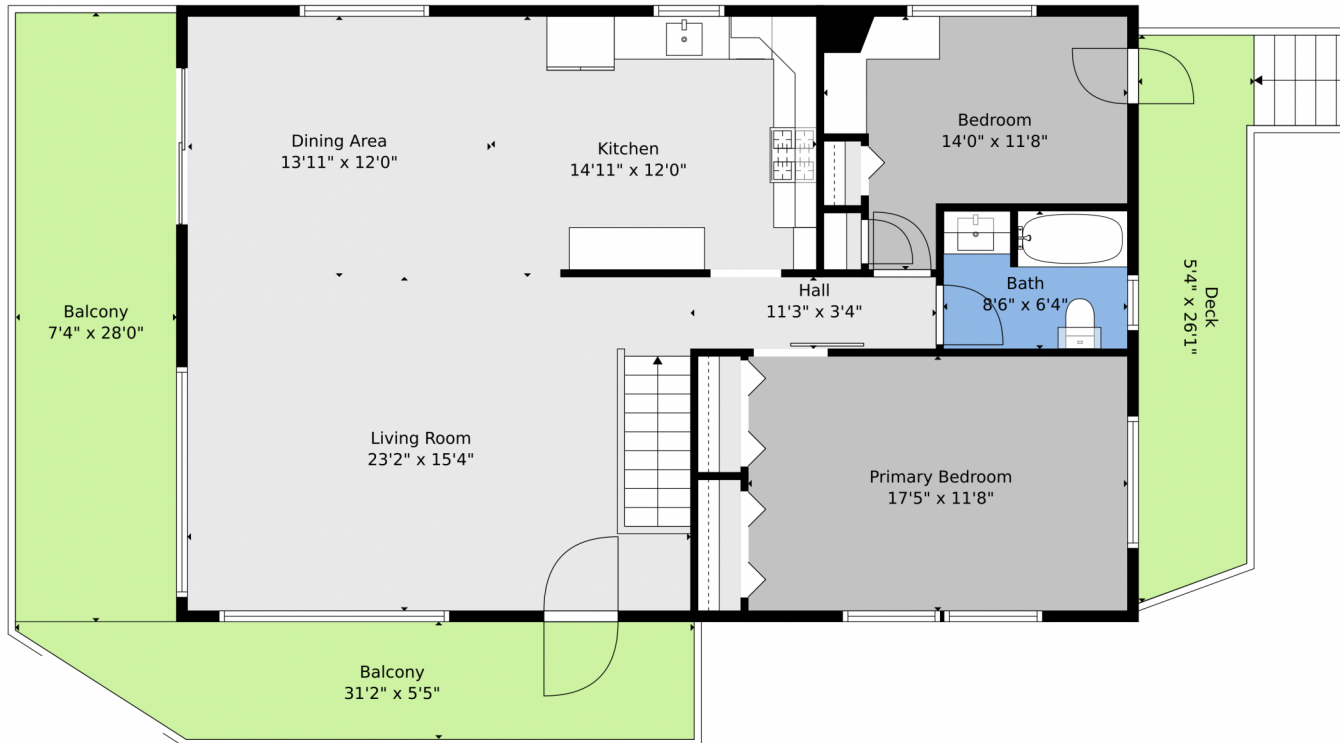


**Jodi Dolph**  
303-902-9968  
jodi.dolph@kw.com  
<https://www.TheDolphTeam.com>



Scan code  
for more  
property  
details





**TOTAL: 2242 sq. ft**  
1st floor: 0 sq. ft, 2nd floor: 0 sq. ft, 3rd floor: 1062 sq. ft, 4th floor: 1180 sq. ft  
EXCLUDED AREAS: SCREENED PORCH: 78 sq. ft, STORAGE: 305 sq. ft, GARAGE: 1080 sq. ft,  
CARPORT: 535 sq. ft, UNDEFINED: 26 sq. ft, UTILITY: 92 sq. ft,  
PORCH: 110 sq. ft, BALCONY: 356 sq. ft, DECK: 146 sq. ft,  
WALLS: 328 sq. ft

Floor Plan Created By V1photos.com. Measurements Deamed Highly Reliable But Not Guaranteed.

Disclaimer: Sizes and Dimensions are Approximate, Actual May Vary.



**Jodi Dolph**  
303-902-9968  
jodi.dolph@kw.com  
<https://www.TheDolphTeam.com>



# 427 Brookside Drive, Bailey, CO 80421 – All Levels



**TOTAL: 2242 sq. ft**  
 1st floor: 0 sq. ft, 2nd floor: 0 sq. ft, 3rd floor: 1062 sq. ft, 4th floor: 1180 sq. ft  
 EXCLUDED AREAS: SCREENED PORCH: 78 sq. ft, STORAGE: 305 sq. ft, GARAGE: 1080 sq. ft,  
 CARPORT: 535 sq. ft, UNDEFINED: 26 sq. ft, UTILITY: 92 sq. ft,  
 PORCH: 110 sq. ft, BALCONY: 356 sq. ft, DECK: 146 sq. ft,  
 WALLS: 328 sq. ft

Floor Plan Created By V1photos.com. Measurements Deamed Highly Reliable But Not Guaranteed.



Disclaimer: Sizes and Dimensions are Approximate, Actual May Vary.



**Jodi Dolph**  
 303-902-9968  
 jodi.dolph@kw.com  
<https://www.TheDolphTeam.com>



Scan code  
 for more  
 property  
 details

