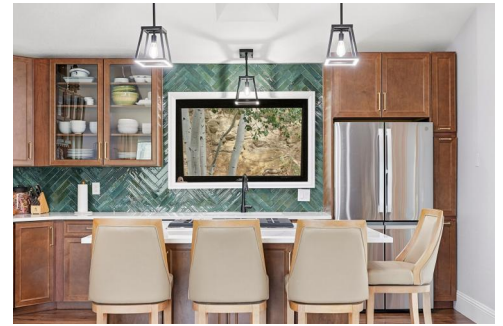




23976 Bent Feather Road
Conifer, CO 80433
COMMUNITY: Conifer Meadows

MLS # 3862078
PRICE \$850,000

A rare modern mountain retreat with designer finishes and stunning views



Single Family



2324 SQFT



3 Beds



2 Baths



2 Car



5.1 Acre

PROPERTY DETAILS

This meticulously designed single-family residence presents an exceptional opportunity in the sought-after Conifer Meadows community of Conifer, Colorado. Spanning 2,324 square feet, this well-appointed home features 3 bedrooms and 2 full bathrooms, making it an ideal choice for discerning buyers seeking a peaceful retreat amidst nature. The property boasts a sophisticated open floor plan, highlighted by vaulted ceilings, new skylights and windows, recessed lighting, and wood-laminate flooring. The gourmet kitchen, equipped with stainless steel appliances, quartz counters, large island and an elegant green herringbone tile backsplash, seamlessly flows into the living area, which features a striking stone surround for the pellet stove. The primary suite offers a luxurious en-suite bathroom complete with a spacious shower and double vanity, while additional bedrooms and office provide flexibility for guests. Enhancing the appeal of this residence are its outdoor living spaces, including a spacious deck designed for entertaining, complemented by stunning mountain views. The two-car garage



Jodi Dolph
303-902-9968
jodi.dolph@kw.com
<https://www.TheDolphTeam.com>



Scan code
for more
property
details



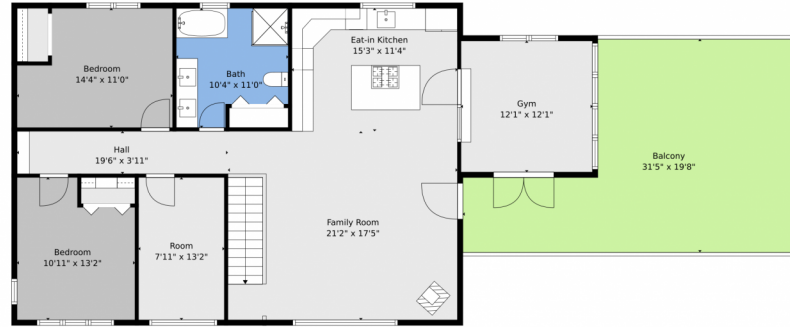
and energy-efficient features include new fire-resistant and woodpecker proof siding and exterior doors further elevate this property. 20 minutes to Red Rocks Amphitheatre and an hour to DIA with two possible routes. Easy home maintenance with a household use well, 6 person septic system, natural gas and composite decking. Situated in a community known for its access to world class outdoor recreation, parks, and hiking trails, this home represents a unique opportunity for those looking to invest in a tranquil lifestyle.



Jodi Dolph
303-902-9968
jodi.dolph@kw.com
<https://www.TheDolphTeam.com>



23976 Bent Feather Road, Conifer, CO 80433 – All Levels



2nd Floor



1st Floor

TOTAL: 2149 sq. ft
1st floor: 829 sq. ft, 2nd floor: 1320 sq. ft
EXCLUDED AREAS: GARAGE: 453 sq. ft, PORCH: 246 sq. ft, DECK: 181 sq. ft,
BALCONY: 460 sq. ft, WALLS: 173 sq. ft

Floor Plan Created By V1photos.com. Measurements Deamed Highly Reliable But Not Guaranteed.



Disclaimer: Sizes and Dimensions are Approximate, Actual May Vary.



Jodi Dolph
303-902-9968
jodi.dolph@kw.com
<https://www.TheDolphTeam.com>

