



350 Jade Street
 Broomfield, CO 80020
 COMMUNITY: Broomfield Heights

MLS # 6591469
 PRICE \$725,000

350 Jade St Broomfield, CO 80020



Single Family 2762 SQFT 6 Beds 2 Baths 0.16 Acre

PROPERTY DETAILS

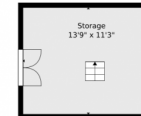
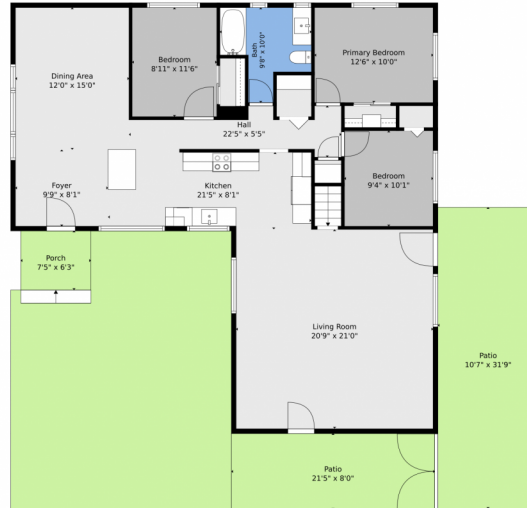
Beautifully updated and move-in ready, this spacious home is ideally located in the heart of Broomfield, conveniently situated between Denver and Boulder. Nestled on a quiet street near schools, parks, and everyday amenities, this property offers both comfort and convenience. Extensive recent upgrades include a new roof, windows, furnace, air conditioning, hot water heater, plumbing, electrical system, driveway, landscaping, sprinkler system, lighting, and fresh interior and exterior paint. The fully remodeled kitchen and bathrooms feature modern finishes, while updated flooring, fixtures, and details throughout create a fresh, contemporary feel. New kitchen appliances and washer/dryer. Offering 6 bedrooms and 2 bathrooms, this home provides plenty of space for families, guests, a home office, or multi-generational living. Thought, quality, and attention to detail summarizes the extensive remodel.



Mark Conley
 970-333-1463
 markconley@yahoo.com



350 Jade Street, Broomfield, CO 80020 – All Levels



1st Floor



Basement

TOTAL: 2245 sq. ft
Basement: 787 sq. ft, 1st floor: 1458 sq. ft,
EXCLUDED AREAS: UTILITY: 153 sq. ft, PATIO: 510 sq. ft, PORCH: 46 sq. ft,
STORAGE: 155 sq. ft, WALLS: 183 sq. ft

Floor Plan Created By V1photos.com. Measurements Deamed Highly Reliable But Not Guaranteed.



Disclaimer: Sizes and Dimensions are Approximate, Actual May Vary.



Mark Conley
970-333-1463
markconley@yahoo.com

