



7206 S Pierson Street
 Littleton, CO 80127
 COMMUNITY: Meadows

MLS # 2006285
 PRICE \$779,000



Single Family 2607 SQFT 4 Beds 3/1 Baths 2 Car 0.22 Acre

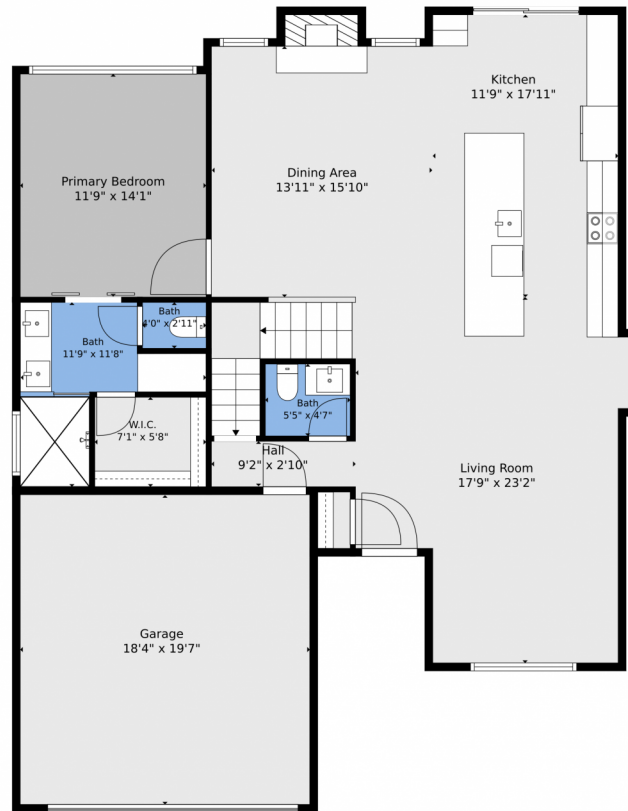
PROPERTY DETAILS

This beautifully remodeled home on a .22 acre lot in the Woodbourne neighborhood features 4 bedrooms, 4 bathrooms, and a finished basement. Its unique open floor plan and vaulted ceilings allow natural light to fill the kitchen, family, and dining areas. The space opens to a landscaped backyard and patio overlooking a perennial garden, perfect for relaxation or entertaining. A storage shed is also included. The Meadows community offers a pool, clubhouse, tennis courts, and playground just down the street. Conveniently located in a quiet area with quick access to C-470, it's within walking distance to schools and entertainment options. Don't miss out!

Jesse Kelker
 303-748-2574
 jesse@exitrealtycherrycreek.com



7206 S Pierson Street, Littleton, CO 80127 – Main



TOTAL: 2345 sq. ft
Basement: 587 sq. ft, 1st floor: 1226 sq. ft, 2nd floor: 532 sq. ft
EXCLUDED AREAS: UTILITY: 53 sq. ft, GARAGE: 359 sq. ft, FIREPLACE: 11 sq. ft,
WALLS: 212 sq. ft

Floor Plan Created By V1photos.com. Measurements Deamed Highly Reliable But Not Guaranteed.

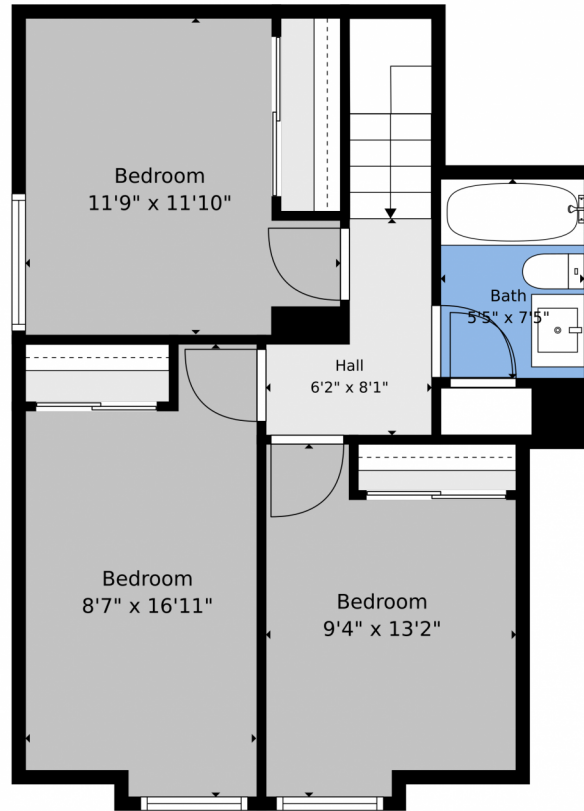


Disclaimer: Sizes and Dimensions are Approximate, Actual May Vary.

Jesse Kelker
303-748-2574
jesse@exitrealtycherrycreek.com



7206 S Pierson Street, Littleton, CO 80127 – 2nd Level



TOTAL: 2345 sq. ft
Basement: 587 sq. ft, 1st floor: 1226 sq. ft, 2nd floor: 532 sq. ft
EXCLUDED AREAS: UTILITY: 53 sq. ft, GARAGE: 359 sq. ft, FIREPLACE: 11 sq. ft,
WALLS: 212 sq. ft

Floor Plan Created By V1photos.com. Measurements Deamed Highly Reliable But Not Guaranteed.

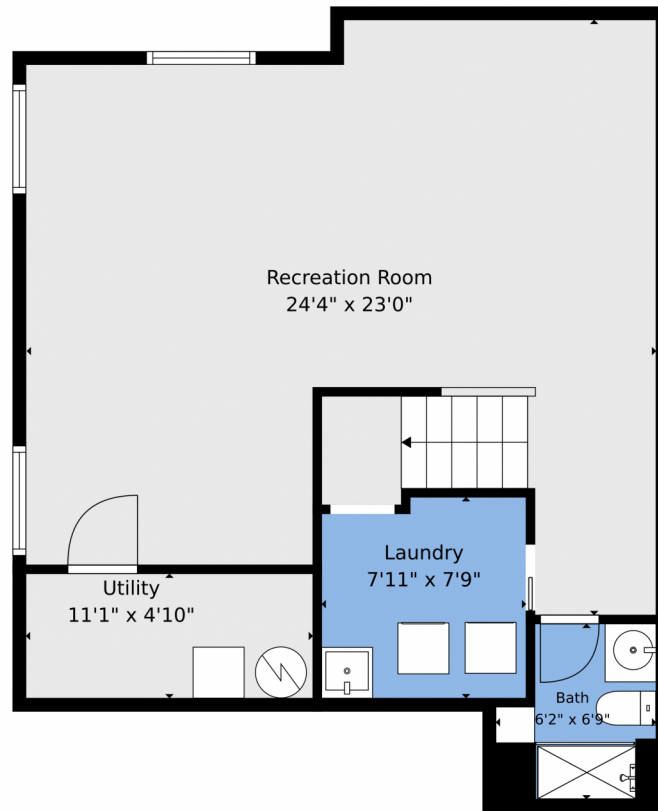


Disclaimer: Sizes and Dimensions are Approximate, Actual May Vary.

Jesse Kelker
303-748-2574
jesse@exitrealtycherrycreek.com



7206 S Pierson Street, Littleton, CO 80127 – Basement



TOTAL: 2345 sq. ft
Basement: 587 sq. ft, 1st floor: 1226 sq. ft, 2nd floor: 532 sq. ft
EXCLUDED AREAS: UTILITY: 53 sq. ft, GARAGE: 359 sq. ft, FIREPLACE: 11 sq. ft,
WALLS: 212 sq. ft

Floor Plan Created By V1photos.com. Measurements Deamed Highly Reliable But Not Guaranteed.



Disclaimer: Sizes and Dimensions are Approximate, Actual May Vary.

Jesse Kelker
303-748-2574
jesse@exitrealtycherrycreek.com



7206 S Pierson Street, Littleton, CO 80127 – All Levels



TOTAL: 2345 sq. ft
Basement: 587 sq. ft, 1st floor: 1226 sq. ft, 2nd floor: 532 sq. ft
EXCLUDED AREAS: UTILITY: 53 sq. ft, GARAGE: 359 sq. ft, FIREPLACE: 11 sq. ft,
WALLS: 212 sq. ft

Floor Plan Created By V1photos.com. Measurements Deamed Highly Reliable But Not Guaranteed.



Disclaimer: Sizes and Dimensions are Approximate, Actual May Vary.

Jesse Kelker
303-748-2574
jesse@exitrealtycherrycreek.com



Scan code
for more
property
details

