



13456 Via Varra  
 Broomfield, CO 80020  
 COMMUNITY: Vantage Point



Condominium



1145 SQFT



2 Beds



2 Baths



1 Car

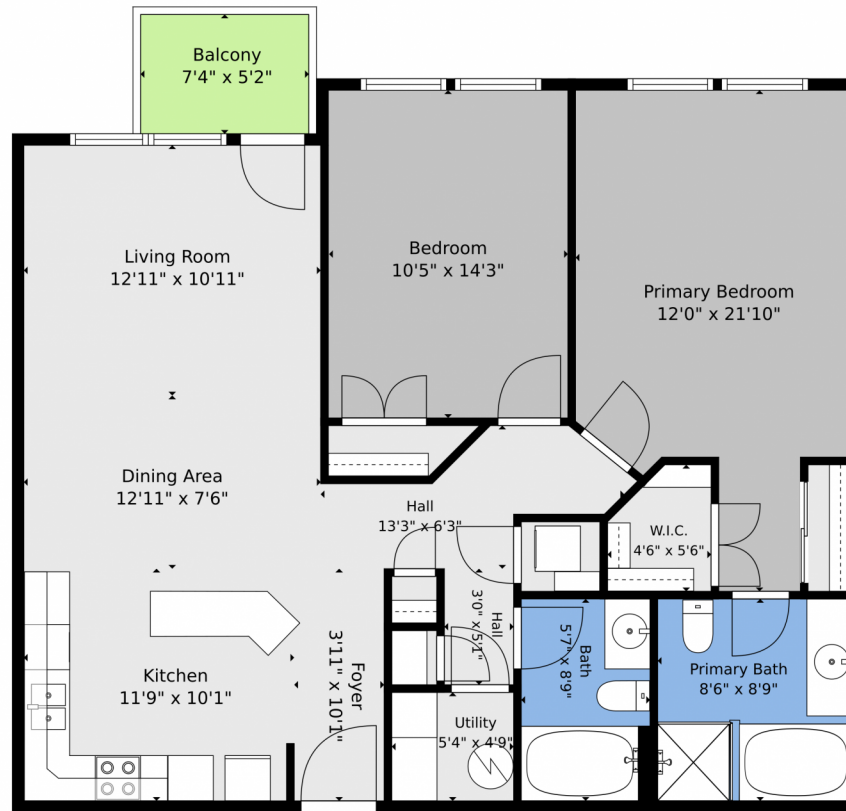


**Kelly Majure**  
 303-709-8613  
 kellym@elevatedrealestate.com



Scan code  
 for more  
 property  
 details





**TOTAL: 1083 sq. ft**  
1st floor: 1083 sq. ft  
EXCLUDED AREAS: BALCONY: 38 sq. ft, WALLS: 68 sq. ft

Floor Plan Created By V1photos.com. Measurements Deamed Highly Reliable But Not Guaranteed.



Disclaimer: Sizes and Dimensions are Approximate, Actual May Vary.



**Kelly Majure**  
303-709-8613  
kellym@elevatedrealestate.com

