



523 Straight Creek Way
Lafayette, CO 80026
COMMUNITY: Indian Peaks



Single Family



2626 SQFT



3 Beds



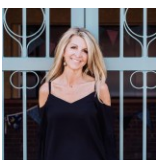
2/1 Baths



2 Car



0.07 Acre



Christy Hepp
303-910-5393
cnishi1068@msn.com
<https://christysellscolorado.com>



Scan code
for more
property
details





TOTAL: 1451 sq. ft
Basement: 0 sq. ft, 1st floor: 544 sq. ft, 2nd floor: 460 sq. ft, 3rd floor: 447 sq. ft
EXCLUDED AREAS: BASEMENT: 431 sq. ft, STORAGE: 41 sq. ft, HALL: 39 sq. ft,
GARAGE: 398 sq. ft, PORCH: 49 sq. ft, PATIO: 320 sq. ft,
FIREPLACE: 11 sq. ft, WALLS: 227 sq. ft

Floor Plan Created By V1photos.com. Measurements Deamed Highly Reliable But Not Guaranteed.



Disclaimer: Sizes and Dimensions are Approximate, Actual May Vary.



Christy Hepp
303-910-5393
cnishi1068@msn.com
<https://christysellscolorado.com>





TOTAL: 1451 sq. ft

Basement: 0 sq. ft, 1st floor: 544 sq. ft, 2nd floor: 460 sq. ft, 3rd floor: 447 sq. ft
EXCLUDED AREAS: BASEMENT: 431 sq. ft, STORAGE: 41 sq. ft, HALL: 39 sq. ft,
GARAGE: 398 sq. ft, PORCH: 49 sq. ft, PATIO: 320 sq. ft,
FIREPLACE: 11 sq. ft, WALLS: 227 sq. ft

Floor Plan Created By V1photos.com. Measurements Deamed Highly Reliable But Not Guaranteed.



Disclaimer: Sizes and Dimensions are Approximate, Actual May Vary.

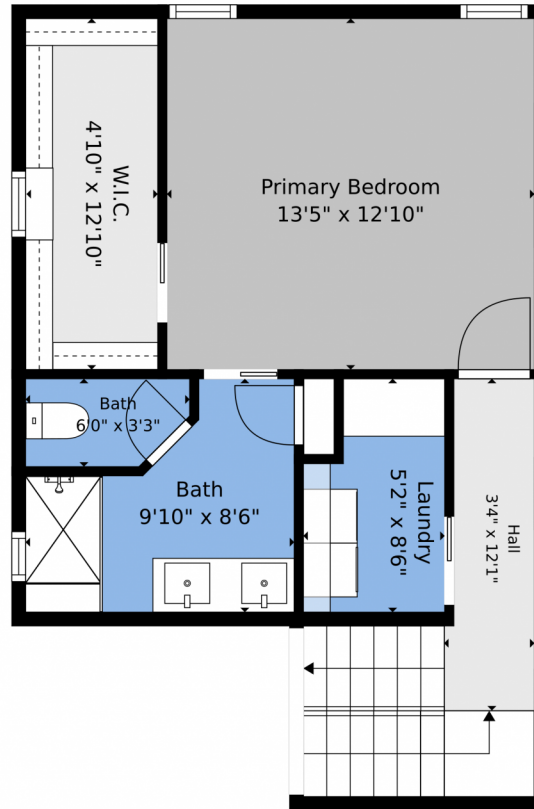


Christy Hepp
303-910-5393
cnishi1068@msn.com
<https://christysellscolorado.com>



Scan code
for more
property
details





TOTAL: 1451 sq. ft

Basement: 0 sq. ft, 1st floor: 544 sq. ft, 2nd floor: 460 sq. ft, 3rd floor: 447 sq. ft
EXCLUDED AREAS: BASEMENT: 431 sq. ft, STORAGE: 41 sq. ft, HALL: 39 sq. ft,
GARAGE: 398 sq. ft, PORCH: 49 sq. ft, PATIO: 320 sq. ft,
FIREPLACE: 11 sq. ft, WALLS: 227 sq. ft

Floor Plan Created By V1photos.com. Measurements Deamed Highly Reliable But Not Guaranteed.



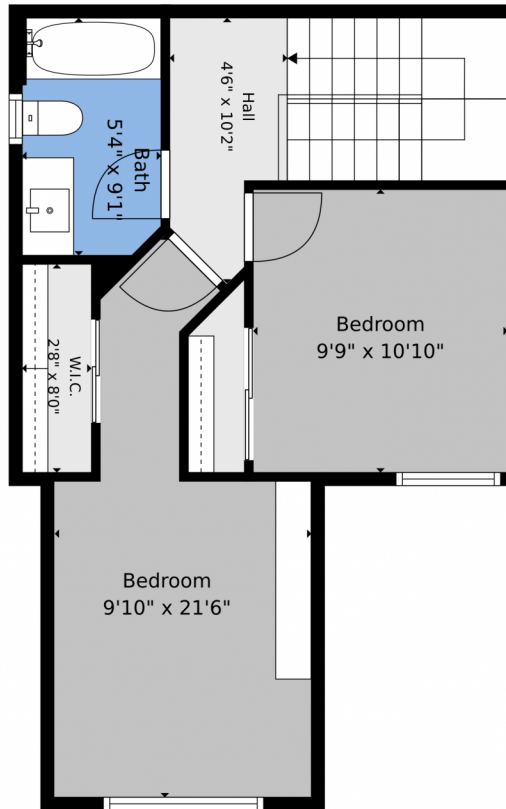
Disclaimer: Sizes and Dimensions are Approximate, Actual May Vary.



Christy Hepp
303-910-5393
cnishi1068@msn.com
<https://christysellscolorado.com>



Scan code
for more
property
details



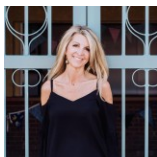
TOTAL: 1451 sq. ft

Basement: 0 sq. ft, 1st floor: 544 sq. ft, 2nd floor: 460 sq. ft, 3rd floor: 447 sq. ft
EXCLUDED AREAS: BASEMENT: 431 sq. ft, STORAGE: 41 sq. ft, HALL: 39 sq. ft,
GARAGE: 398 sq. ft, PORCH: 49 sq. ft, PATIO: 320 sq. ft,
FIREPLACE: 11 sq. ft, WALLS: 227 sq. ft

Floor Plan Created By V1photos.com. Measurements Deamed Highly Reliable But Not Guaranteed.



Disclaimer: Sizes and Dimensions are Approximate, Actual May Vary.



Christy Hepp
303-910-5393
cnishi1068@msn.com
<https://christysellscolorado.com>





TOTAL: 1451 sq. ft
 Basement: 0 sq. ft, 1st floor: 544 sq. ft, 2nd floor: 460 sq. ft, 3rd floor: 447 sq. ft
 EXCLUDED AREAS: BASEMENT: 431 sq. ft, STORAGE: 41 sq. ft, HALL: 39 sq. ft,
 GARAGE: 398 sq. ft, PORCH: 49 sq. ft, PATIO: 320 sq. ft,
 FIREPLACE: 11 sq. ft, WALLS: 227 sq. ft

Floor Plan Created By V1photos.com. Measurements Deamed Highly Reliable But Not Guaranteed.



Disclaimer: Sizes and Dimensions are Approximate, Actual May Vary.



Christy Hepp
 303-910-5393
 cnishi1068@msn.com
<https://christysellscolorado.com>



Scan code
 for more
 property
 details