

18820 East Progress Avenue
Centennial, CO 80015
COMMUNITY: Jackson Farm



18820 East Progress Avenue, Centennial, CO 80015 - All Levels



Single Family



2700 SQFT



4 Beds



3 Baths



3 Car



0.13 Acre



Greg Livingston
303-915-4172
Greg@GregLivingston.com
<https://www.GregLivingston.com>



Scan code
for more
property
details





TOTAL: 2549 sq. ft
Basement: 0 sq. ft, 1st floor: 1249 sq. ft, 2nd floor: 1300 sq. ft
EXCLUDED AREAS: BASEMENT: 544 sq. ft, UTILITY: 114 sq. ft, GARAGE: 589 sq. ft,
PORCH: 65 sq. ft, PATIO: 262 sq. ft, DECK: 23 sq. ft,
OPEN TO BELOW: 283 sq. ft, WALLS: 262 sq. ft

Floor Plan Created By V1photos.com. Measurements Deamed Highly Reliable But Not Guaranteed.



Disclaimer: Sizes and Dimensions are Approximate, Actual May Vary.



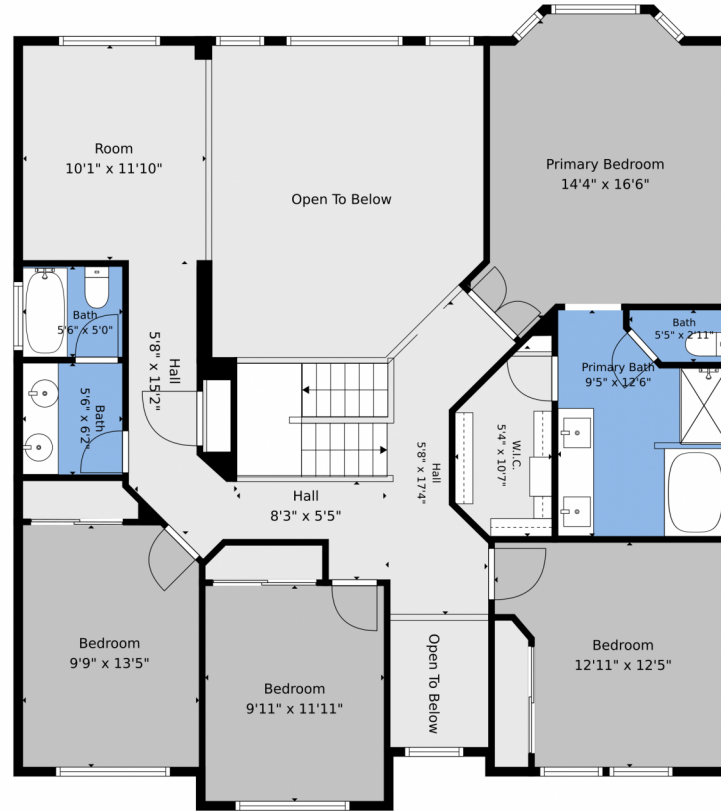
Greg Livingston
303-915-4172
Greg@GregLivingston.com
<https://www.GregLivingston.com>



Scan code
for more
property
details



18820 East Progress Avenue, Centennial, CO 80015 – 2nd Level



TOTAL: 2549 sq. ft
Basement: 0 sq. ft, 1st floor: 1249 sq. ft, 2nd floor: 1300 sq. ft
EXCLUDED AREAS: BASEMENT: 544 sq. ft, UTILITY: 114 sq. ft, GARAGE: 589 sq. ft,
PORCH: 65 sq. ft, PATIO: 262 sq. ft, DECK: 23 sq. ft,
OPEN TO BELOW: 283 sq. ft, WALLS: 262 sq. ft

Floor Plan Created By V1photos.com. Measurements Deamed Highly Reliable But Not Guaranteed.



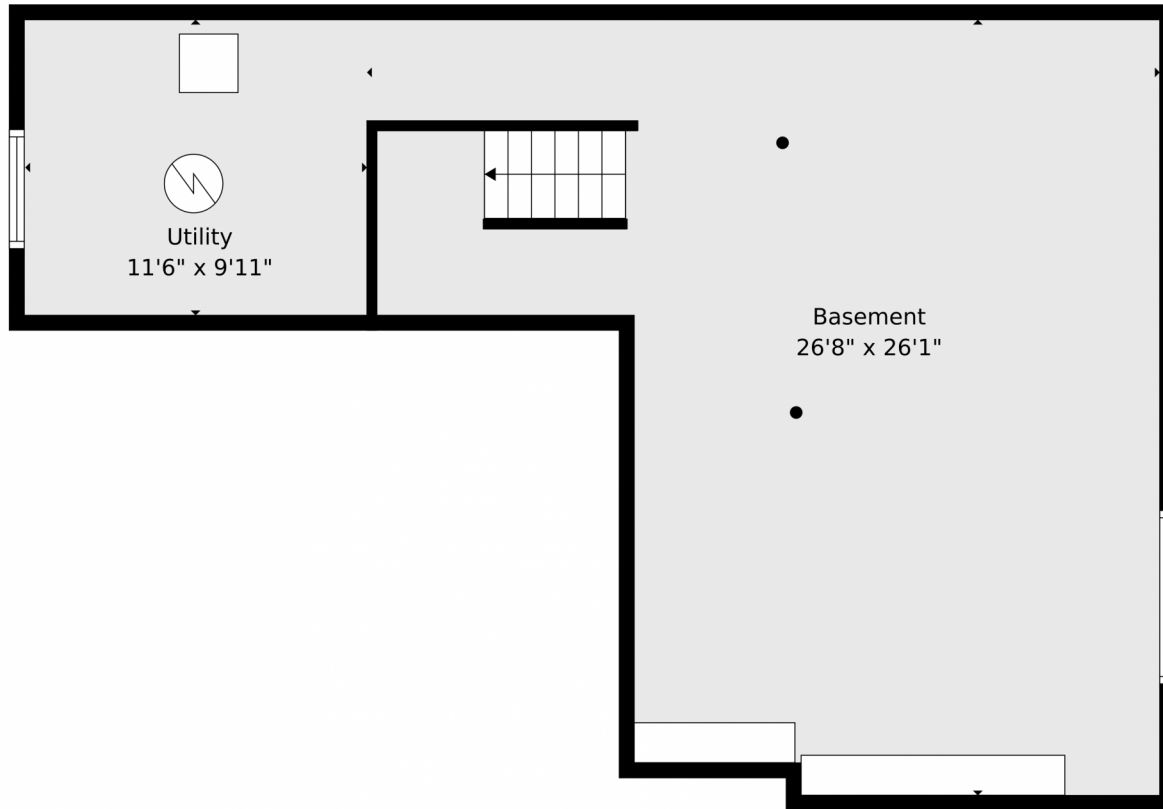
Disclaimer: Sizes and Dimensions are Approximate, Actual May Vary.



Greg Livingston
303-915-4172
Greg@GregLivingston.com
<https://www.GregLivingston.com>



18820 East Progress Avenue, Centennial, CO 80015 – Lower Level



TOTAL: 2549 sq. ft
Basement: 0 sq. ft, 1st floor: 1249 sq. ft, 2nd floor: 1300 sq. ft
EXCLUDED AREAS: BASEMENT: 544 sq. ft, UTILITY: 114 sq. ft, GARAGE: 589 sq. ft,
PORCH: 65 sq. ft, PATIO: 262 sq. ft, DECK: 23 sq. ft,
OPEN TO BELOW: 283 sq. ft, WALLS: 262 sq. ft

Floor Plan Created By V1photos.com. Measurements Deamed Highly Reliable But Not Guaranteed.

Disclaimer: Sizes and Dimensions are Approximate, Actual May Vary.



Greg Livingston
303-915-4172
Greg@GregLivingston.com
<https://www.GregLivingston.com>



18820 East Progress Avenue, Centennial, CO 80015 – All Levels



TOTAL: 2549 sq. ft
Basement: 0 sq. ft, 1st floor: 1249 sq. ft, 2nd floor: 1300 sq. ft
EXCLUDED AREAS: BASEMENT: 544 sq. ft, UTILITY: 114 sq. ft, GARAGE: 589 sq. ft,
PORCH: 65 sq. ft, PATIO: 262 sq. ft, DECK: 23 sq. ft,
OPEN TO BELOW: 283 sq. ft, WALLS: 262 sq. ft

Floor Plan Created By V1photos.com. Measurements Deamed Highly Reliable But Not Guaranteed.



Disclaimer: Sizes and Dimensions are Approximate, Actual May Vary.



Greg Livingston
303-915-4172
Greg@GregLivingston.com
<https://www.GregLivingston.com>



Scan code
for more
property
details