



floorplan\_single\_2



 Single Family

 1893 SQFT

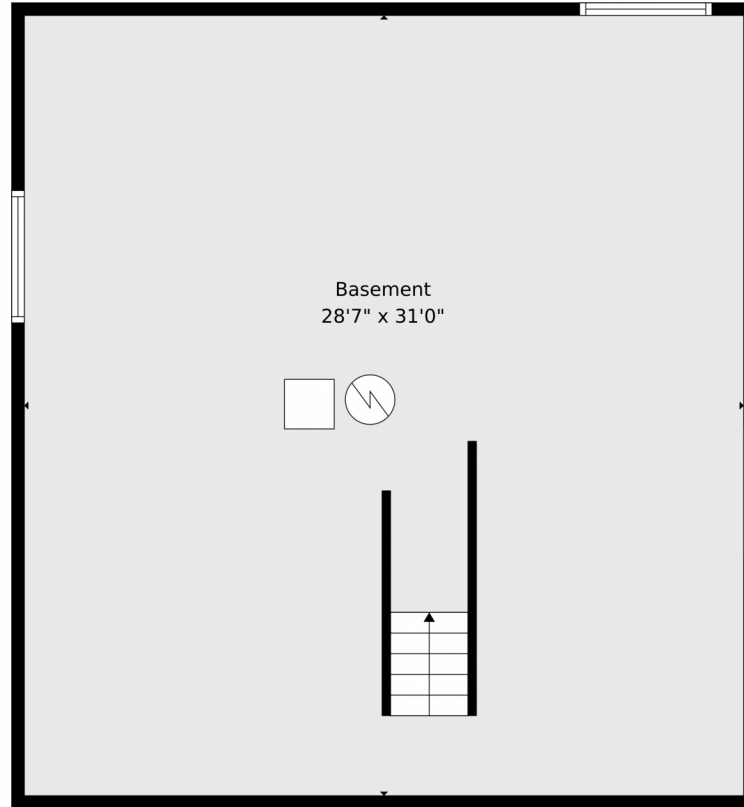
 3 Beds

 2/1 Baths



**Taylor Haas**  
 303-665-7368  
 taylorh@coloradorpm.com  
<https://www.coloradorpm.com/available-rental-properties-denver>





**TOTAL: 1816 sq. ft**  
Basement: 0 sq. ft, 1st floor: 903 sq. ft, 2nd floor: 913 sq. ft  
EXCLUDED AREAS: BASEMENT: 886 sq. ft, GARAGE: 380 sq. ft, OPEN TO BELOW: 414 sq. ft,  
WALLS: 227 sq. ft

Floor Plan Created By V1photos.com. Measurements Deamed Highly Reliable But Not Guaranteed.

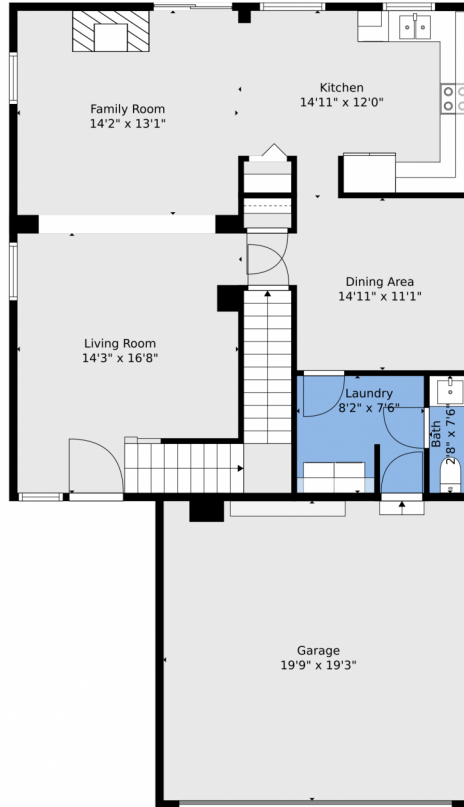


Disclaimer: Sizes and Dimensions are Approximate, Actual May Vary.



**Taylor Haas**  
303-665-7368  
taylorh@coloradorpm.com  
<https://www.coloradorpm.com/available-rental-properties-denver>





**TOTAL: 1816 sq. ft**  
Basement: 0 sq. ft, 1st floor: 903 sq. ft, 2nd floor: 913 sq. ft  
EXCLUDED AREAS: BASEMENT: 886 sq. ft, GARAGE: 380 sq. ft, OPEN TO BELOW: 414 sq. ft,  
WALLS: 227 sq. ft

Floor Plan Created By V1photos.com. Measurements Deamed Highly Reliable But Not Guaranteed.



Disclaimer: Sizes and Dimensions are Approximate, Actual May Vary.



**Taylor Haas**  
303-665-7368  
taylorh@coloradorpm.com  
<https://www.coloradorpm.com/available-rental-properties-denver>



Scan code  
for more  
property  
details



# 17624 Peyton Drive, Parker, CO 80134 – 2nd Level



**TOTAL: 1816 sq. ft**  
Basement: 0 sq. ft, 1st floor: 903 sq. ft, 2nd floor: 913 sq. ft  
EXCLUDED AREAS: BASEMENT: 886 sq. ft, GARAGE: 380 sq. ft, OPEN TO BELOW: 414 sq. ft,  
WALLS: 227 sq. ft

Floor Plan Created By V1photos.com. Measurements Deamed Highly Reliable But Not Guaranteed.



Disclaimer: Sizes and Dimensions are Approximate, Actual May Vary.

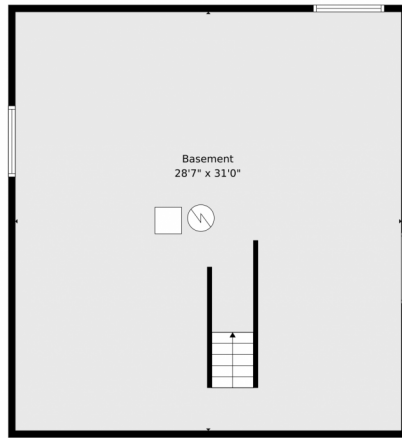


**Taylor Haas**  
303-665-7368  
taylorh@coloradorpm.com  
<https://www.coloradorpm.com/available-rental-properties-denver>

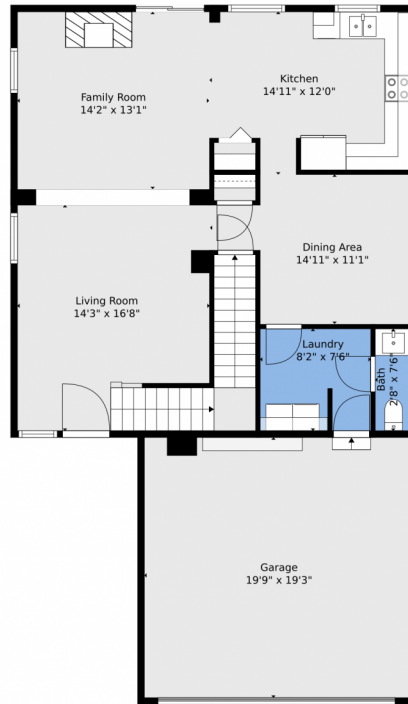


Scan code  
for more  
property  
details

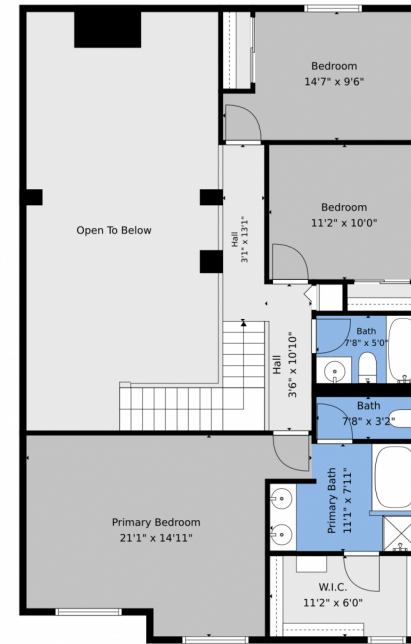
# 17624 Peyton Drive, Parker, CO 80134 – All Levels



Basement



1st Floor



2nd Floor

**TOTAL: 1816 sq. ft**  
Basement: 0 sq. ft, 1st floor: 903 sq. ft, 2nd floor: 913 sq. ft  
EXCLUDED AREAS: BASEMENT: 886 sq. ft, GARAGE: 380 sq. ft, OPEN TO BELOW: 414 sq. ft,  
WALLS: 227 sq. ft

Floor Plan Created By V1photos.com. Measurements Deamed Highly Reliable But Not Guaranteed.



Disclaimer: Sizes and Dimensions are Approximate, Actual May Vary.



Taylor Haas

303-665-7368

taylorh@coloradorpm.com

<https://www.coloradorpm.com/available-rental-properties-denver>



Scan code  
for more  
property  
details

